

ISUZU DIESEL ENGINE
6HK1
ISUZU ENGINE TYPE 6HK1XASK01
PARTS CATALOG

GENUINE PARTS

FOR

KOBELCO

SK350LC-11, SK350DLC-11
SK400DLC-11

ISUZU MOTORS LIMITED

11571



エンジン機器
ENGINE COMPONENTS

Printed in Japan 2022.07

ITEM	PART NO.	PART NAME	QTY	Reference	APPLICABLE NO.
		PREFACE			
0-05A		ENGINE GASKET KIT			
0-10A		CYLINDER HEAD COVER			
0-11A		CYLINDER HEAD			
0-12A		CYLINDER BLOCK			
0-13A		OIL PAN AND LEVEL GAUGE			
0-14A		CAMSHAFT AND VALVE			
0-15A		CRANKSHAFT, PISTON AND FLYWHEEL			
0-20A		TIMING GEAR CASE AND FLYWHEEL HOUSING			
0-22A		ENGINE MOUNTING			
0-25A		INLET MANIFOLD			
0-27A		EXHAUST MANIFOLD			
0-28A		VENTILATION SYSTEM			
0-30A		WATER PUMP AND CORROSION RESISTOR			
0-31A		THERMOSTAT AND HOUSING			
0-32A		WATER PIPING; ENGINE			
0-33A		FAN AND FAN BELT			
0-36A		TURBOCHARGER SYSTEM			
0-40A		FUEL INJECTION SYSTEM			
0-41A		FUEL FILTER AND BRACKET			
0-42A		FUEL PUMP AND PIPE			
0-50A		OIL COOLER AND OIL FILTER			
0-51A		OIL PUMP AND OIL STRAINER			
0-52A		OIL AND VACUUM PIPING; ENGINE			
0-57A		EMISSION PIPING			
0-60A		ENGINE ELECTRICAL CONTROL PARTS			
0-61A		BATTERY AND ENGINE ELECTRICAL PARTS			
0-65A		STARTER			
0-66A		GENERATOR			
1-10A		RADIATOR			
1-40A		FUEL TANK			
1-46A		DEF TANK AND PIPING			
1-50A		EXHAUST PIPE AND SILENCER			
8-10A		WIRING HARNESS AND FUSE			
8-15A		FIXING PARTS; WIRING HARNESS			

How to read this Catalog.

- Parts mentioned in this Parts Catalog may not necessarily be standard equipping parts.
- Parts change may be made without prior notice.
- Form of this Parts Catalog.

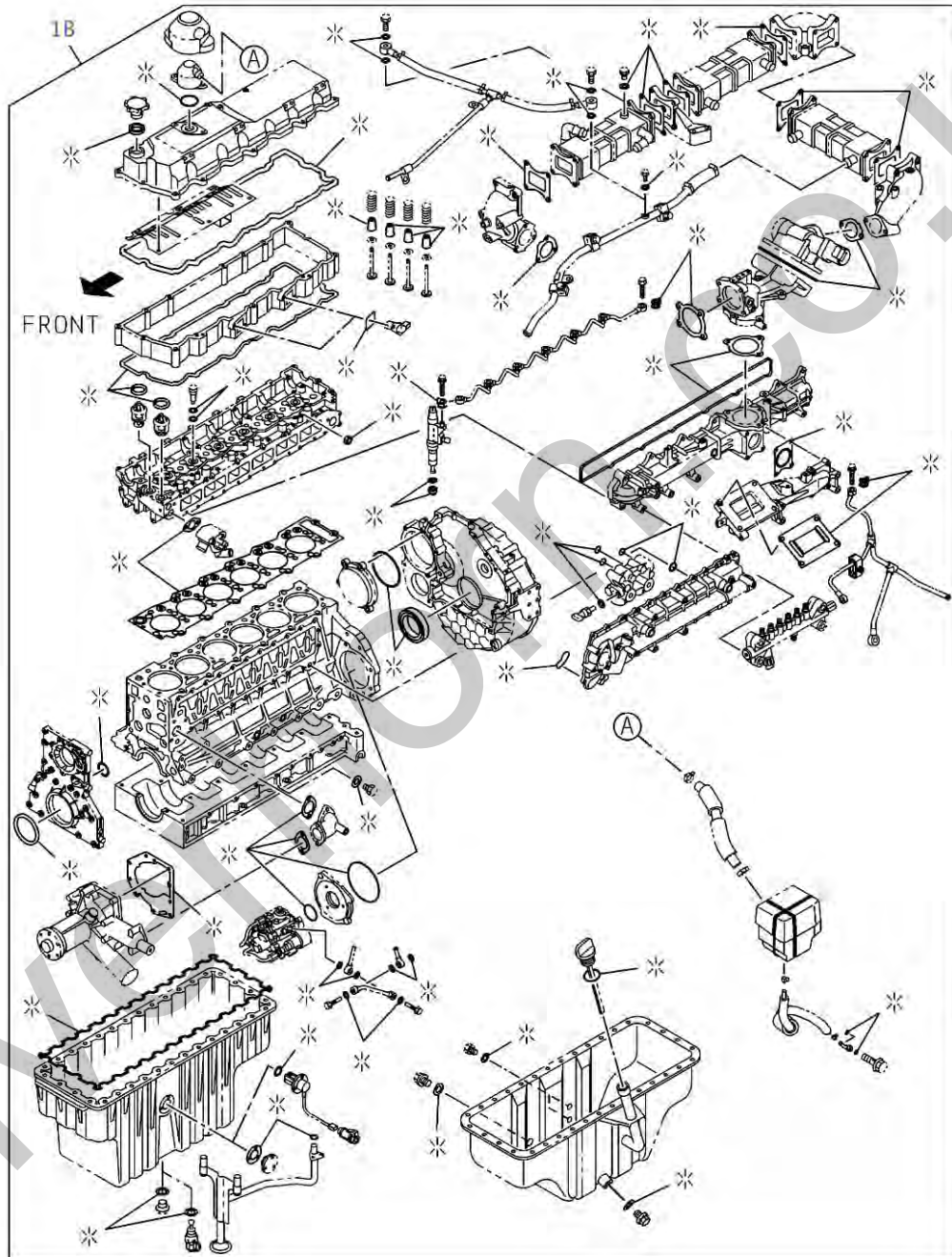
① 符号 ITEM	② 部品番号 PART NO.	③ 部品名 PART NAME		④ 数量 QTY	⑤ 備考 REMARKS	⑥ 切換年月 APPLIED DATE
	0-12A	CYLINDER BLOCK	シリンダブロック			
1	VI8980894850	BLOCK ASM; CYL	ブロック アセンブリ; シリンダ	1		
6	VI8942298530	CUP; SEALING	カップ; シーリング	5		
6	VI8972096090	CUP; SEALING	カップ; シーリング	1		
7	VI9096640010	PLUG; WATER DRAIN	プラグ; ウォータトレイン	1		
8	VI8941674701	BOLT; BRG CAP	ボルト; ベアリング キャップ	10		
15 A	VI1096050190	PLUG; OIL GALLERY	プラグ; オイル キャマリ	1		
15 B	VI9092045100	PLUG; OIL GALLERY	プラグ; オイル キャマリ	1		

- ① Item : Index number given to every part in the part illustration.
- ② Part Number : Proper number given to parts.
Note) Not soled parts are illustated partly but not listed.
- ③ Part Name : The actual description of the part is listed first then the location of the part.
(EXAMPLE) COVER ; CYLINDER HEAD
NAME LOCATION
- ④ Quantity required : "Number of parts necessary for One (1) unit" is shown. However, for component parts for assembly, it shows the "Number of parts for One (1) set" of assembly.
- ⑤ Remarks : Marks shown in the "Remarks" column means the following.
Superseding part numbers are listed directly below the old part number.
An alphabetical character; i.e. "A" or "C", is used to indicate the type of interchangeability that exists between the old and new part number. If an alphabetical character is not shown then these part numbers are not interchangeable.
EXAMPLE : Part No. REMARKS
(Old) --001-0 C [001-0 is replaced by 002-0 with the
(New) --002-0 interchangeability of "C"]
"A " Totally interchangeable. Either part number may be used.
"C " The new part number will replace the old part number, however, the old part number will not replace the new part number.
- ⑥ Applied Date : Indicated by the year and month (i.e. 9202 = February 1992).

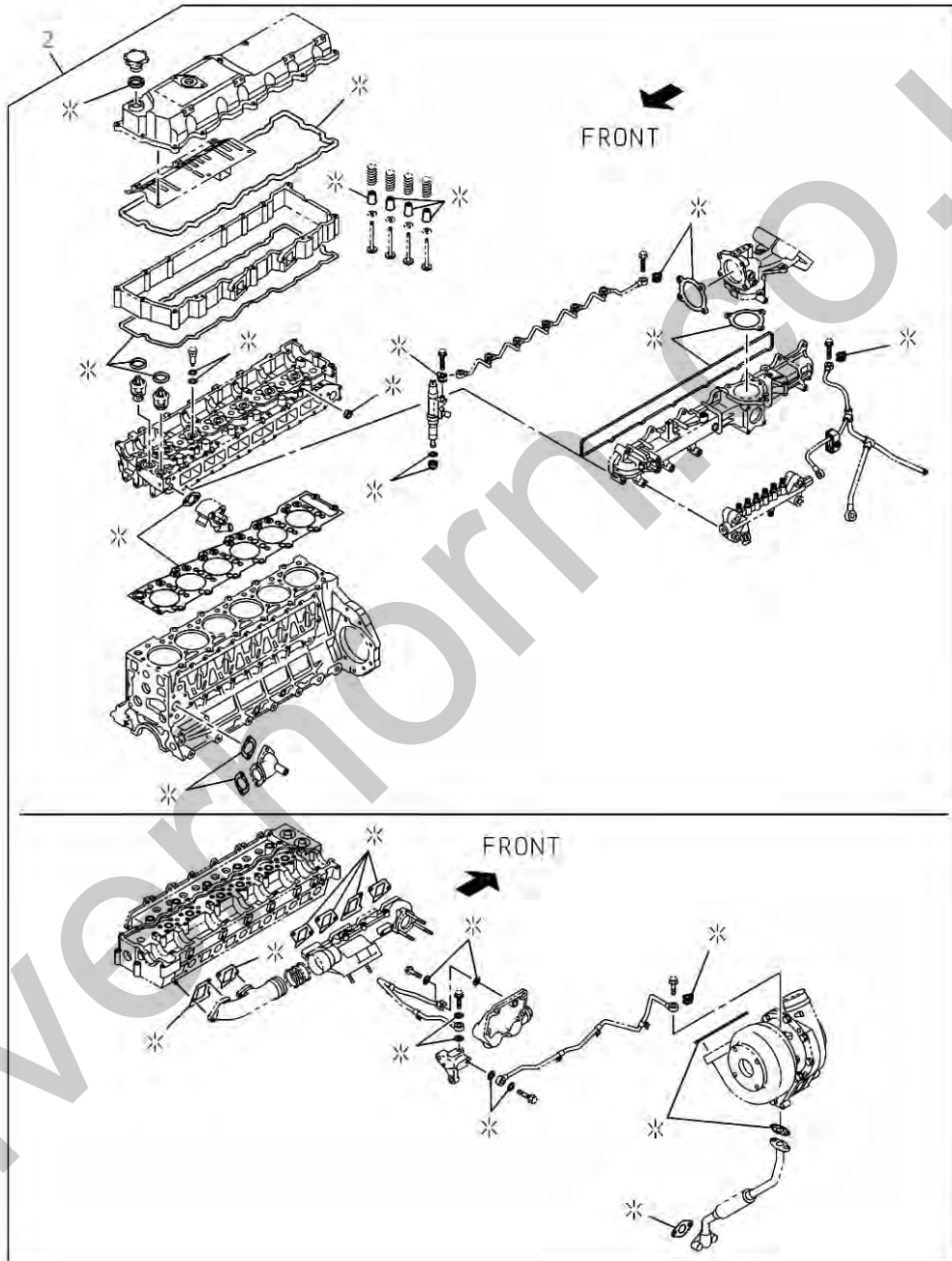
[Memo]

Silverhorn.CO.UK

エンジン ガasket キット ・ ENGINE GASKET KIT



005A0211571

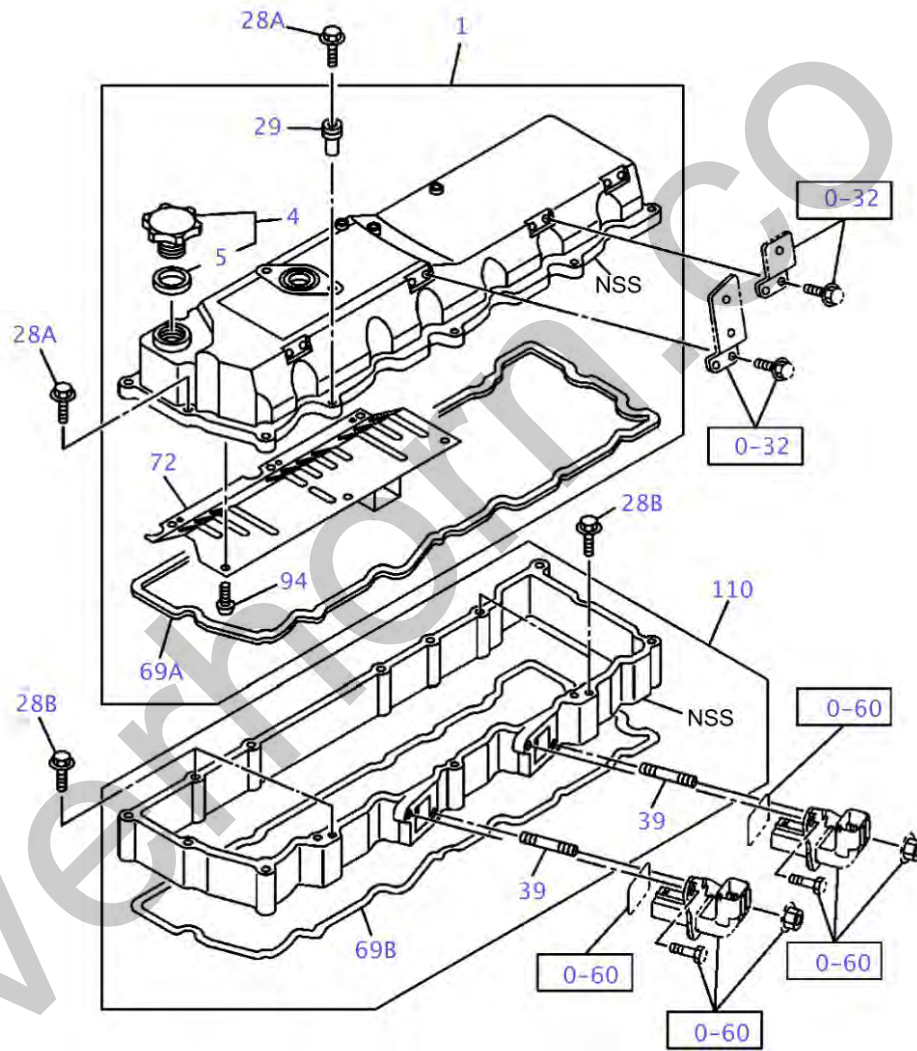


005A0411571

ITEM	PART NO.	PART NAME	QTY	Reference	APPLICABLE NO.
	.	ENGINE GASKET KIT			
1B	VI1878154153	GASKET SET; ENG OVERHAUL	1		
2	VI1878154161	GASKET SET; ENG HD OVERHAUL	1		

Silverhorn.CO.UK

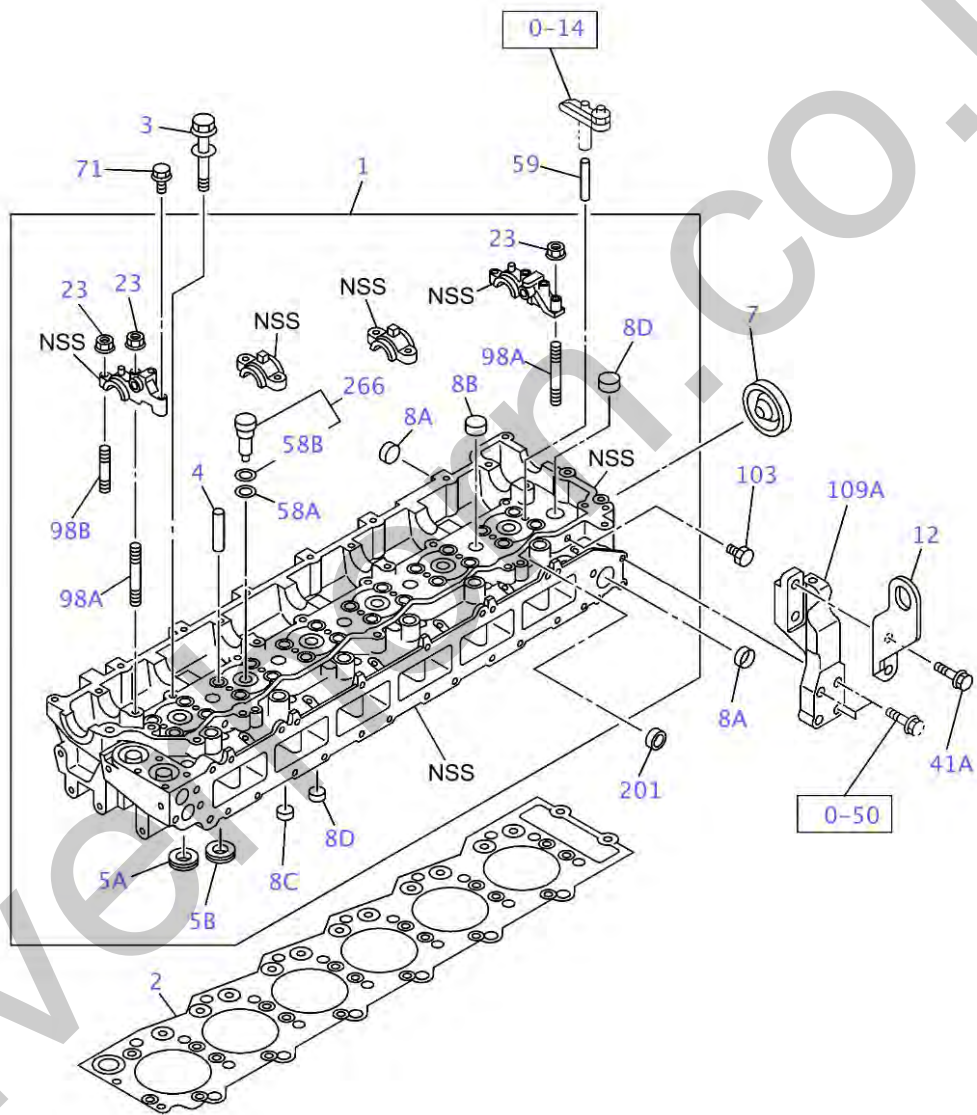
シリンダ ヘッド カバー - CYLINDER HEAD COVER



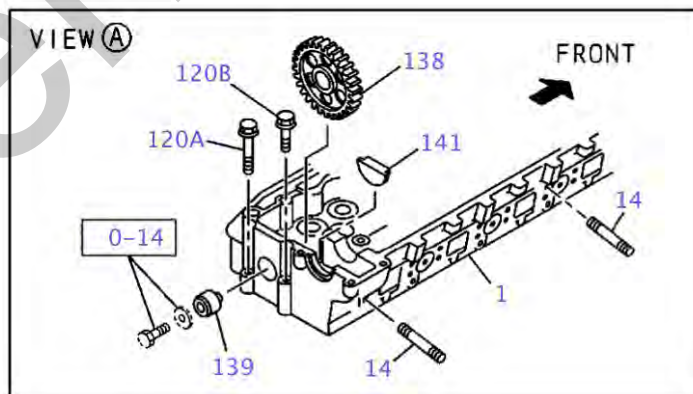
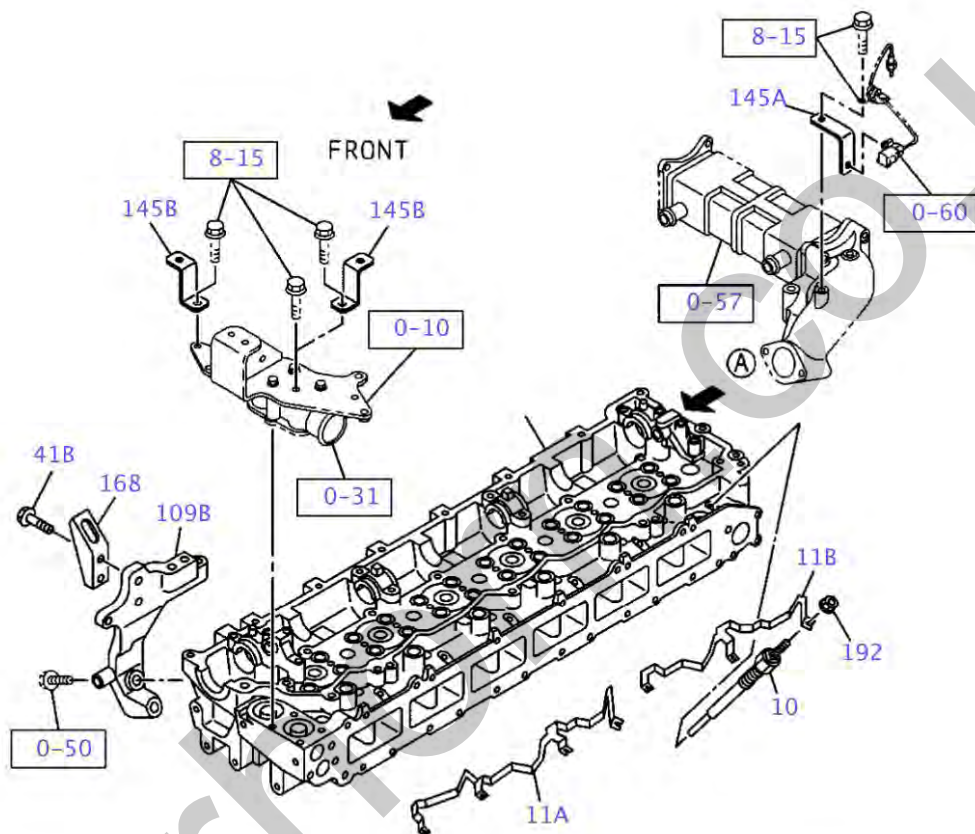
010A0111571

ITEM	PART NO.	PART NAME	QTY	Reference	APPLICABLE NO.
	.	CYLINDER HEAD COVER			
	.				
1	VI8980399981	COVER; CYL HD	1		
4	VI8943997230	CAP; OIL FILLER	1		
5	VI8943996890	GASKET; OIL FILLER	1	ID=49 OD=58	
28A	VI0280508700	BOLT; HD COVER	11	M8X70 FLANGE	
28B	VI0280508450	BOLT; HD COVER	4	M8X45 FLANGE	
29	VI8943920970	RUBBER; MTG, HD COVER	11		
29	VI8976018491	RUBBER; MTG, HD COVER	11		
39	VI8943965120	STUD; COVER, HD	2	M8X28 L=38	
39	VI8976581930	STUD; COVER, HD	2	M8X28 L=38	
69A	VI8943913790	GASKET; HD TO COVER	1		
69B	VI8943913800	GASKET; HD TO COVER	1		
72	VI8943926550	PLATE; INNER HD COVER	1		
94	VI0350504080	SCREW; BAFFLE PLATE, CYL HD COVER	6	M4X8	
110	VI8943908623	COVER; CYL HEAD LWR	1		
	.				
0-32	.				
0-60	.				

シリンダヘッド・CYLINDER HEAD



011A0111571



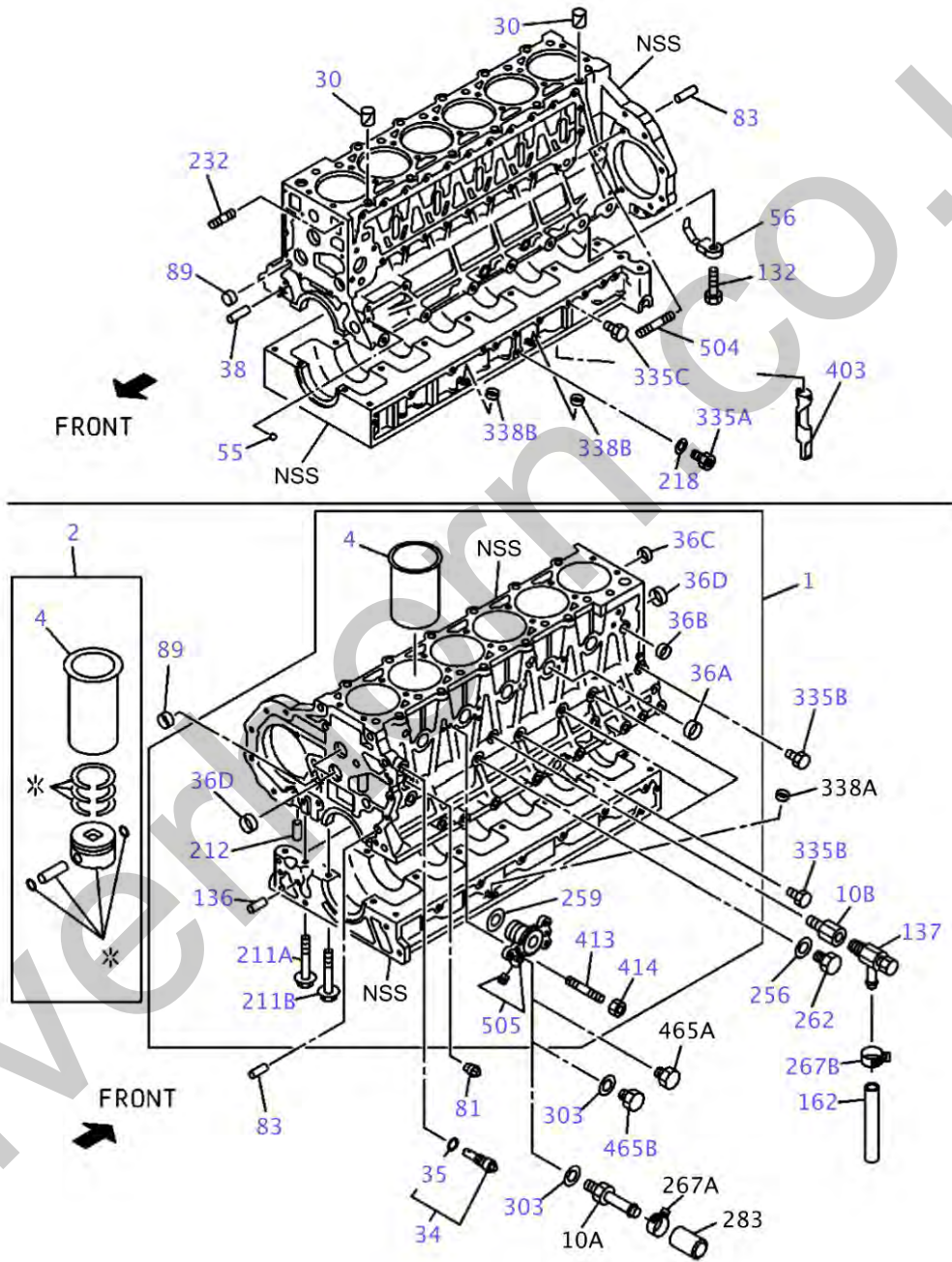
011A0211571

ITEM	PART NO.	PART NAME	QTY	Reference	APPLICABLE NO.
	.	CYLINDER HEAD			
	.				
1	VI8982438230	HEAD ASM; CYL	1		
2	VI8976018195	GASKET; CYL HD	1		
3	VI8982600050	BOLT; CYL HD TO BLOCK	26	M14X115 W/FLANGE	
4	VI8973767192	GUIDE; VLV	24	L=57	
5A	VI8980288740	SEAT; VLV INSERT	12	INLET	
5B	VI8980288750	SEAT; VLV INSERT	12	EXHAUST	
7	VI8970968260	CUP; SEALING, CYL HEAD	1	OD=51	
8A	VI1096000122	CUP; SEALING, WATER JACKET	7	OD=32	
8B	VI1096000160	CUP; SEALING, WATER JACKET	6	OD=25	
8C	VI5111290060	CUP; SEALING, WATER JACKET	7	OD=16	
8D	VI9111291280	CUP; SEALING, WATER JACKET	11	OD=20	
10	VI8943907776	PLUG; GLOW	6	NGK	
11A	VI8980406480	CONNECTOR; GLOW PLUG	1		
11B	VI8980406490	CONNECTOR; GLOW PLUG	1		
12	VI9117776121	HANGER; ENG, RR	1		
14	VI8943972860	STUD; EXH MANIF	12	M10X60 L=75	
23	VI0911802080	NUT; CAM BRKT	8	M8 FLANGE	
41A	VI0281510200	BOLT; ENG HANGER	2	M10X20 FLANGE	
41B	VI0281512300	BOLT; ENG HANGER	2	M12X30 FLANGE	
58A	VI8976049160	GASKET; SLEEVE, NOZZLE HOLDER	6	ID=26.4	1403-
58B	VI8980041870	GASKET; SLEEVE, NOZZLE HOLDER	6	ID=26.2	1403-
59	VI8973816031	GUIDE; BRIDGE	12		
71	VI0280508350	BOLT; CAM BRKT	2	M8X35 FLANGE	
98A	VI8943225122	STUD; CAM BRKT	2	M8X54 L=79	
98B	VI8943225132	STUD; CAM BRKT	6	M8X41 L=66	
103	VI8980034160	PLUG; HD	1	M8X10	
109A	VI8981125582	BRACKET; ENG HANGER	1		
109B	VI8981161402	BRACKET; ENG HANGER	1		
120A	VI8943995540	BOLT; CYL HD TO HSG	1	M10X73	
120B	VI8943995550	BOLT; CYL HD TO HSG	1	M10X43	
138	VI8971126071	GEAR; IDLE	1	Z=41	
139	VI8971863981	SHAFT; IDLE GEAR	1		
141	VI8981638130	PLUG; RUBBER, CYL HD	2		
145A	VI8983055010	BRACKET	1		
145B	VI1474766580	BRACKET	1		
168	VI1117770870	HANGER; ENG, FRT	1		
192	VI8973688530	NUT; GLOW PLUG	6	M4 FLANGE	
201	VI1096390340	GASKET; SLEEVE, INJ PUMP	6	OD=30	
266	VI8980184620	SLEEVE ASM; NOZZLE HOLDER	6		
	.				
0-10	.				
0-14	.				
0-31	.				

ITEM	PART NO.	PART NAME	QTY	Reference	APPLICABLE NO.
0-50	.				
0-57	.				
0-60	.				
8-15	.				

Silverhorn.CO.UK

シリンダ ブロック・CYLINDER BLOCK

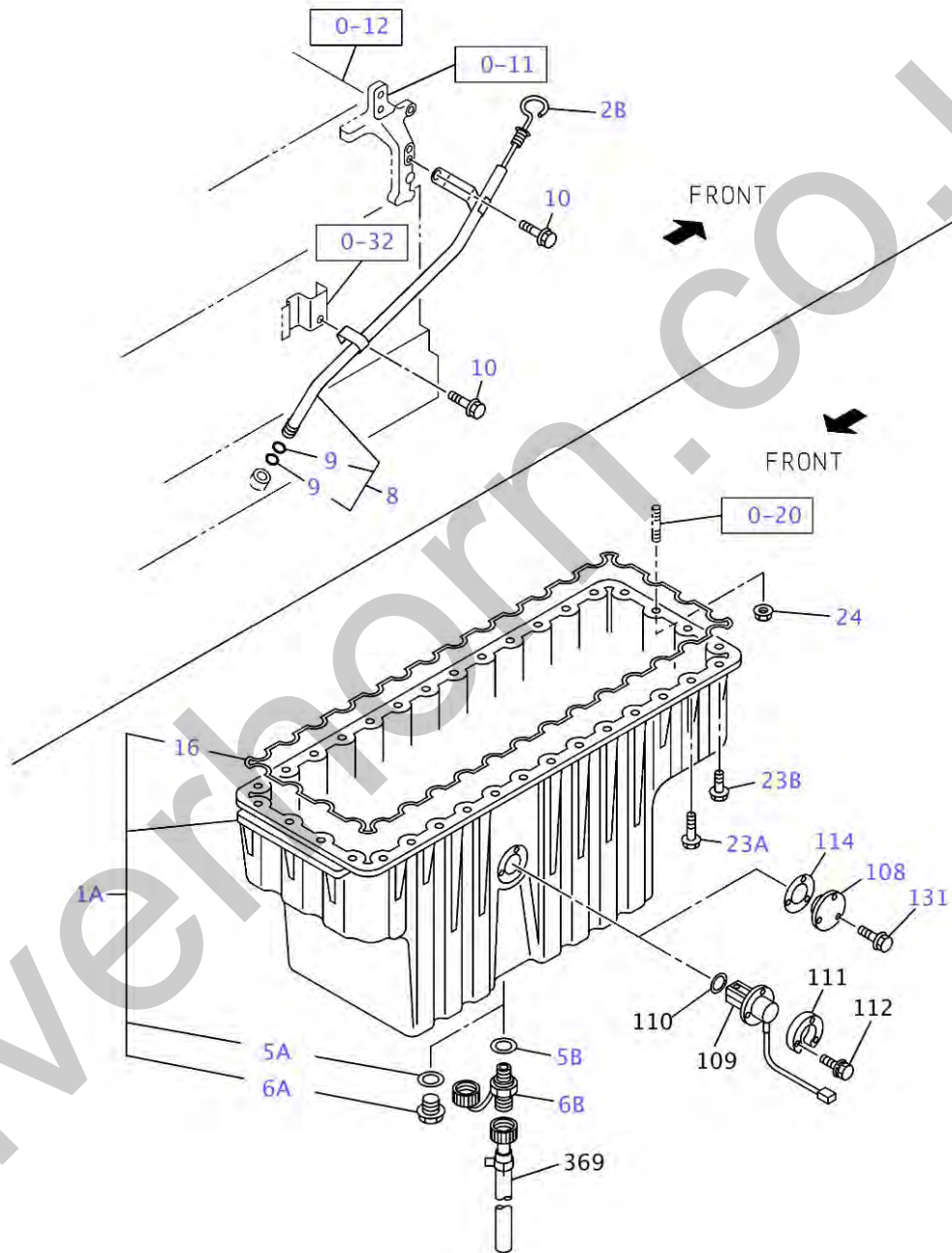


012A0111571

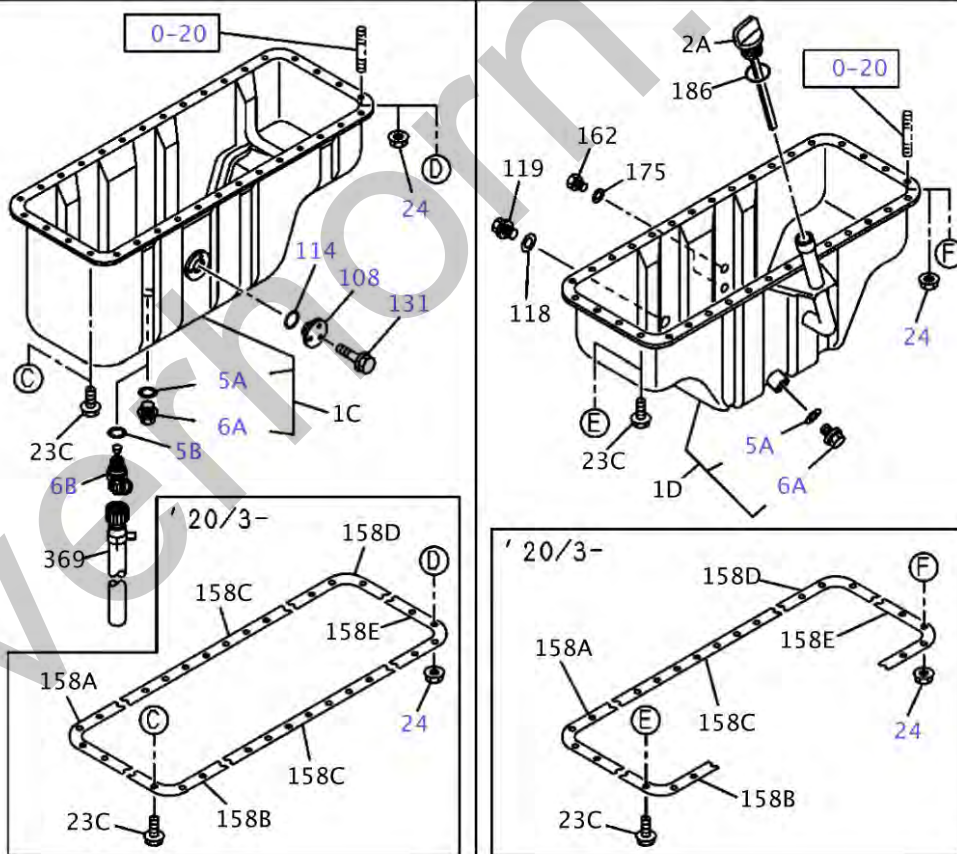
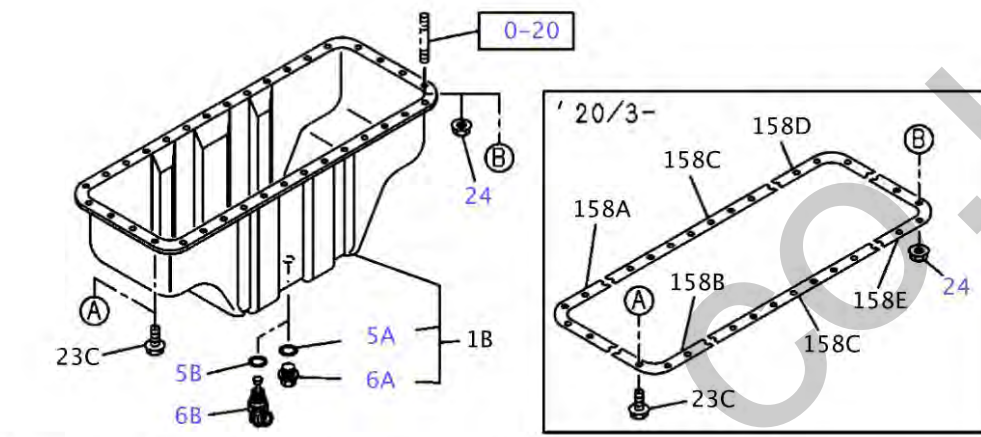
ITEM	PART NO.	PART NAME	QTY	Reference	APPLICABLE NO.
	.	CYLINDER BLOCK			
1	VI8982069460	BLOCK ASM; CYL	1		
1	VI8982069650	BLOCK ASM; CYL	1		
2	VI1878142051	LINER SET; ENG CYL	6	OD GRADE=1X	
2	VI1878142061	LINER SET; ENG CYL	6	OD GRADE=3X	
4	VI8980140461	LINER; C/BL	6	OD GRD=1X, ID=NO N	
4	VI8943916021	LINER; C/BL	6	OD GRD=1X, ID=NO N	
4	VI8980140471	LINER; C/BL	6	OD GRD=3X, ID=NO N	
4	VI8943916031	LINER; C/BL	6	OD GRD=3X, ID=NO N	
10B	VI8943963780	CONNECTOR; WATER DRAIN	1		
30	VI8943996881	PIN; CYL HD GASKET SETTING	2	OD=18.15	
34	VI8943930771	VALVE; OIL RELIEF	1		
35	VI5096230350	GASKET; RELIEF VLV	1	ID=27.7	
36A	VI1096000052	CUP; SEALING, WATER JACKET	4	OD=45	
36B	VI1096000160	CUP; SEALING, WATER JACKET	1	OD=25	
36C	VI8943990050	CUP; SEALING, WATER JACKET	1	OD=25	
36D	VI8970968240	CUP; SEALING, WATER JACKET	4	OD=40	
38	VI8944836740	PIN; TIMING GEAR CASE	2	L=22	
55	VI9000970110	PLUG; OIL GALLERY	1	3/8" BALL	
56	VI8981733420	JET; OIL, PISTON COOLING	6		
81	VI8943973380	PLUG; WATER JACKET	1	PT3/8	
83	VI8944836740	PIN; FLYWHEEL HSG	2	L=22	
89	VI9111291280	CUP; SEALING, OIL GALLERY	3	OD=20	
132	VI8943944191	VALVE; CHECK, OIL	6	M12X18.5	
136	VI8980915660	BUSHING; DRIVE SHAFT, OIL PUMP	2		
137	VI1096800240	COCK; DRAIN, WATER	1		
162	VI0035593000	HOSE; WATER DRAIN, C/BL	1	L=350 S.B. L=3000	
211A	VI8943995532	BOLT; CRANKCASE	25	M10X82 FLANGE	
211B	VI8970776380	BOLT; CRANKCASE	14	M14X115 W/FLANGE	
212	VI8971354230	PIN; CRANKCASE	2	OD=10 L=20	
218	VI8982513440	GASKET; PLUG, C/BL SIDE	1	ID=12.2 OD=17.2	
232	VI1093020890	STUD; WATER PUMP	1		
256	VI1096301410	GASKET; ADAPTER	1	ID=14.2 OD=25	
259	VI1096231840	GASKET; ADAPTER	1	ID=38.7	
262	VI9098621560	PLUG; ADAPTER	1	M14X14	
267B	VI1097041000	CLIP; DRAIN HOSE	1		

ITEM	PART NO.	PART NAME	QTY	Reference	APPLICABLE NO.
303	VI1096301410	GASKET; PLUG	1	ID=14.2 OD=25	
335A	VI5132650010	PLUG; C/BL, SIDE	1	M12X10	
335B	VI8973296170	PLUG; C/BL, SIDE	4	M14X16.5	
335B	VI8976581850	PLUG; C/BL, SIDE	4	M14X16.5	
335C	VI8980034160	PLUG; C/BL, SIDE	1	M8X10	
338B	VI5111290030	CUP; SEALING, GUIDE TUBE HOLE	2	OD=15.6	
403	VI8943953511	GUIDE; GALLERY	1		
413	VI0410108300	STUD; ADAPTER	2	M8X30 L=41	
414	VI0911802080	NUT; ADAPTER	2	M8 FLANGE	
465B	VI8980429440	PLUG	1	M14X9	
504	VI8973632370	STUD; INJ PUMP	2	M10X46.5 L=58.5	
504	VI8970663861	STUD; INJ PUMP	2	M10X46.5 L=58.5	
505	VI8976118540	ADAPTER; WATER FEED	1		

オイルパンアンドレベルゲージ・OIL PAN AND LEVEL GAUGE



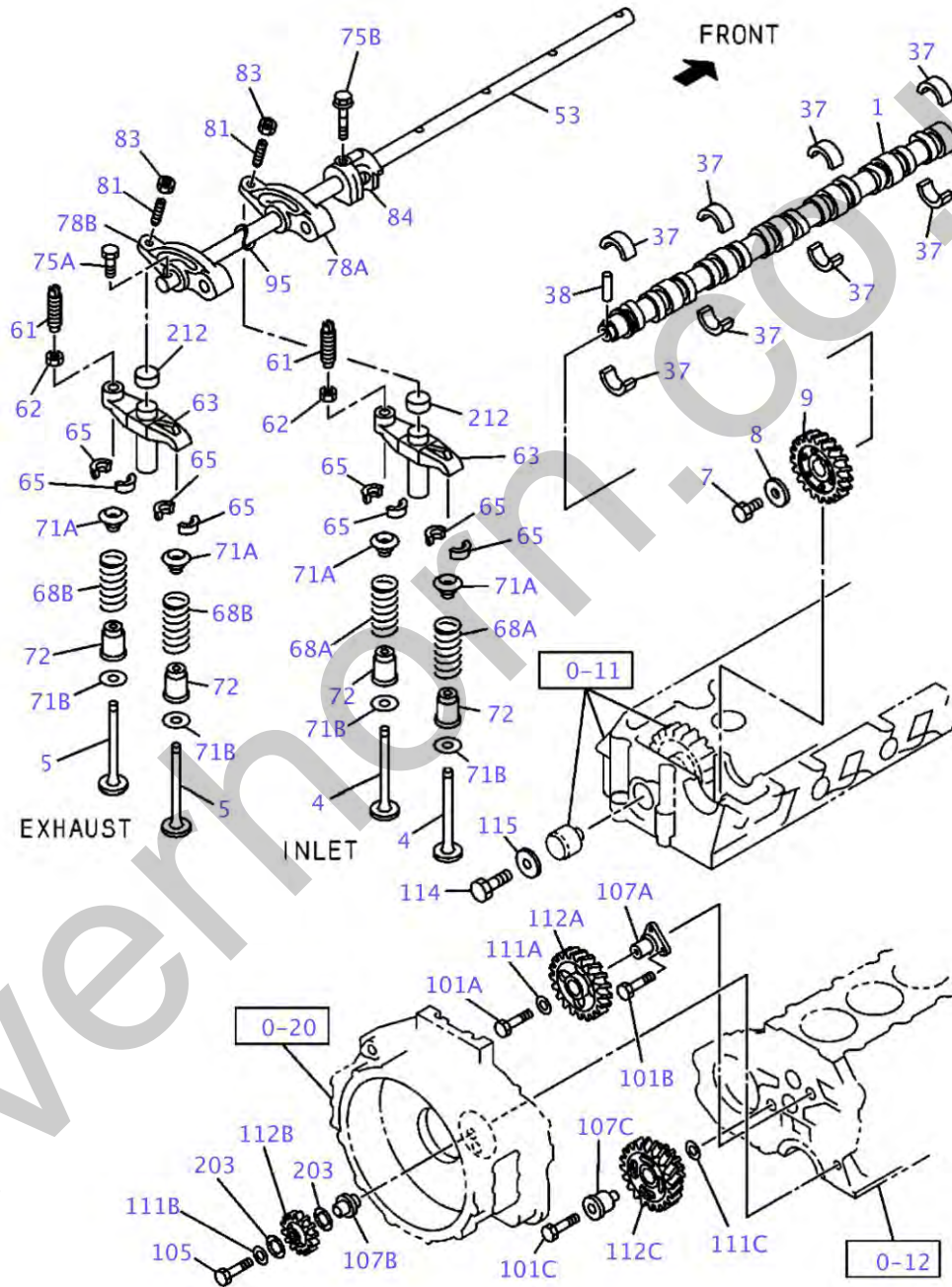
013A0111571



013A0211571

ITEM	PART NO.	PART NAME	QTY	Reference	APPLICABLE NO.
	.	OIL PAN AND LEVEL GAUGE			
	.				
1A	VI8981527390	PAN ASM; OIL	1		
2B	VI1117604521	GAUGE; OIL LEVEL	1		
5A	VI1096230580	GASKET; PLUG, OIL DRAIN	1	ID=26.8	
5B	VI1096300900	GASKET; PLUG, OIL DRAIN	1	ID=24.2	
6A	VI1096040220	PLUG; OIL DRAIN	1	M24X17 FLANGE	
6B	VI8981442470	PLUG; OIL DRAIN	1	M24X12	
8	VI8981145511	TUBE; GUIDE, OIL LEVEL GAUGE	1		
9	VI1096234690	GASKET; GUIDE TUBE, OIL LEVEL GAUGE	2		
10	VI0280508160	BOLT; GUIDE TUBE	2	M8X16 FLANGE	
16	VI8981227070	GASKET; OIL PAN TO C/BL	1		
23A	VI0280508400	BOLT; OIL PAN	29	M8X40 FLANGE	
23B	VI0286508250	BOLT; OIL PAN	1	M8X25 FLANGE	
24	VI0911801080	NUT; OIL PAN	4	M8 FLANGE	
108	VI1113691230	COVER; OIL PAN	1		
114	VI1096233550	GASKET; COVER, OIL PAN	1	ID=27	
131	VI0280506120	BOLT; COVER NOISE SHIELD	3	M6X12 FLANGE	
	.				
0-11	.				
0-12	.				
0-20	.				
0-32	.				

カムシャフト アンド バルブ ・ CAMSHAFT AND VALVE



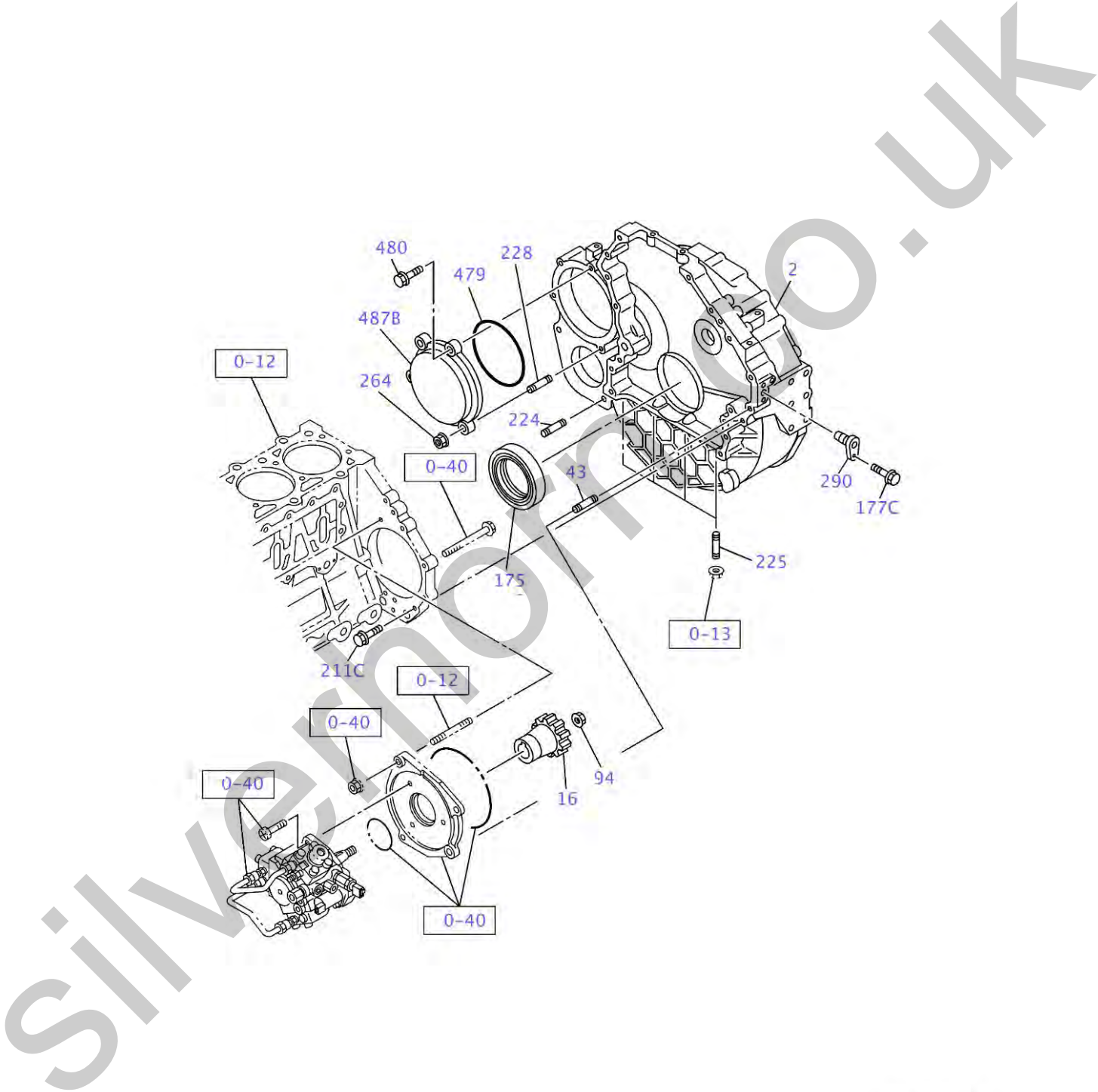
014A0111571

ITEM	PART NO.	PART NAME	QTY	Reference	APPLICABLE NO.
	.	CAMSHAFT AND VALVE			
1	VI8982272611	CAMSHAFT	1		
4	VI8943958822	VALVE; INL	12		
5	VI8972098764	VALVE; EXH	12		
7	VI8943964390	BOLT; CM/SHF GEAR	1	M14X40	
8	VI9098518503	WASHER; CM/SHF GEAR	1	ID=14.5	
9	VI8980189343	GEAR; CM/SHF	1	Z=35	
37	VI8973861890	METAL; CM/SHF	4	B=16 UPPER	
37	VI8976026990	METAL; CM/SHF	4	B=26 LOWER	
38	VI8943994870	PIN; CAM BRG SET	1	OD=7 L=7.5	
53	VI8973899180	SHAFT; ROCKER ARM	1		
61	VI8943948030	SCREW; ADJ, BRIDGE	12	M8X21	
62	VI9098445740	NUT; ADJ SCREW LK BRIDGE	12	M8	
63	VI8943920023	BRIDGE	12		
65	VI5125650040	COLLAR; SPLIT	48		
68A	VI8973528880	SPRING; VLV	12	INLET; MARK BLUE	
68B	VI8943958851	SPRING; VLV	12	EXHAUST; MARK WHITE	
71A	VI8943914680	SEAT; SPR	24	ID=14.3 T=1.0	
71B	VI8943907832	SEAT; SPR	24	OD=32.8 T=12.75	
72	VI8973767200	SEAL; VLV GUIDE	24		
75A	VI0280508400	BOLT; BRKT	2	M8X40 FLANGE	
75B	VI8943931310	BOLT; BRKT	5	M10X62 FLANGE	
78A	VI8973064213	ARM; ROCKER	6	INLET	
78B	VI8973064243	ARM; ROCKER	6	EXHAUST	
81	VI8943950240	SCREW; ADJ, ROCKER ARM	12	M10 L=32	
83	VI0911115100	NUT; ADJ SCREW, LK	12	M10	
84	VI8943958362	BRACKET; ROCKER SHAFT, INTER	5		
95	VI8943929990	SPRING; ROCKER SHAFT	6		
101A	VI0239514300	BOLT; THRUST COLLAR	1	M14X30	
101B	VI0280608160	BOLT; THRUST COLLAR	3	M8X16 FLANGE	
101C	VI0169564600	BOLT; THRUST COLLAR	1	M14X60	
105	VI8970667980	BOLT; IDLE GEAR SHAFT	1	M14X65	
107A	VI8973500210	SHAFT; IDLE GEAR	1		
107B	VI8980410990	SHAFT; IDLE GEAR	1		
107C	VI8981456500	SHAFT; IDLE GEAR	1		
111A	VI8972097282	COLLAR; THRUST, IDLE GEAR	1	ID=14.5 OD=46	
111B	VI8980236160	COLLAR; THRUST, IDLE GEAR	1	ID=14.3 OD=53	
111C	VI8943968970	COLLAR; THRUST, IDLE GEAR	1	ID=24 OD=60	
112A	VI8976067670	GEAR; IDLE	1	Z=61	
112B	VI8980415650	GEAR; IDLE	1	Z=34	
112C	VI8981456471	GEAR; IDLE	1	Z=72-60-30	

ITEM	PART NO.	PART NAME	QTY	Reference	APPLICABLE NO.
114	VI8943722211	BOLT; IDLE GEAR	1	M14X36.5	
115	VI8972097282	WASHER; THRUST, IDLE GEAR	1	ID=14.5 OD=46	
203	VI8980410890	WASHER; THRUST	2		
212	VI8943960152	CAP; ADJ SCREW	12		
	.				
0-11	.				
0-12	.				
0-20	.				

Silverhorn.CO.UK

ITEM	PART NO.	PART NAME	QTY	Reference	APPLICABLE NO.
	.	CRANKSHAFT, PISTON AND FLYWHEEL			
1	VI8976030041	CRANKSHAFT	1		
10	VI8973720761	METAL SET; CRANKSHAFT, STANDARD	7	BLUE	
10	VI8973720771	METAL SET; CRANKSHAFT, STANDARD	7	BLACK	
10	VI8973720781	METAL SET; CRANKSHAFT, STANDARD	7	BROWN	
12	VI8982349100	FLYWHEEL	1		
18	VI1123714582	PULLEY; CR/SHF	1		
20	VI8943922763	DAMPER; CR/SHF	1		
22	VI9098519350	PLATE; PULLEY	4	ID=17 OD=30	
24	VI0281510160	BOLT; DAMPER	6	M10X16 FLANGE	
28	VI8943922551	GEAR; CR/SHF	1	Z=42	
32	VI9081508160	PIN; FLYWHEEL	2	OD=8 L=16	
34	VI9098786260	PIN; GEAR SETTING	1	OD=5 L=6	
35	VI8943919530	GEAR; RING	1	Z=141	
38	VI8943974961	WASHER; FLYWHEEL	1	ID=55 OD=110	
40	VI8943930702	BOLT; FLYWHEEL	8	M16X62	
42A	VI8973865480	WASHER; THRUST, CR/SHF	1		
42B	VI8973865490	WASHER; THRUST, CR/SHF	2		
57	VI8943911560	PIN; PULLEY	1	OD=8 L=16	
58	VI0109566000	BOLT; CR/SHF PULLEY	4	M16X100	
63	VI8982445220	PISTON	6	GRADE=NON	
68	VI8980171660	RING SET; PISTON, STANDARD	6		
73	VI8976163580	METAL SET; CONN ROD, STANDARD	6	GREEN	
73	VI8976163590	METAL SET; CONN ROD, STANDARD	6	YELLOW	
83	VI8980188631	PIN; PISTON	6		
84	VI8980184253	ROD ASM; CONN	6		
85	VI8943917941	BUSHING; CONNROD	6		
86	VI8980911410	BOLT; CONNROD	12	M13X57 FLANGE	
126	VI1095870811	RING; SNAP, PISTON PIN	12		

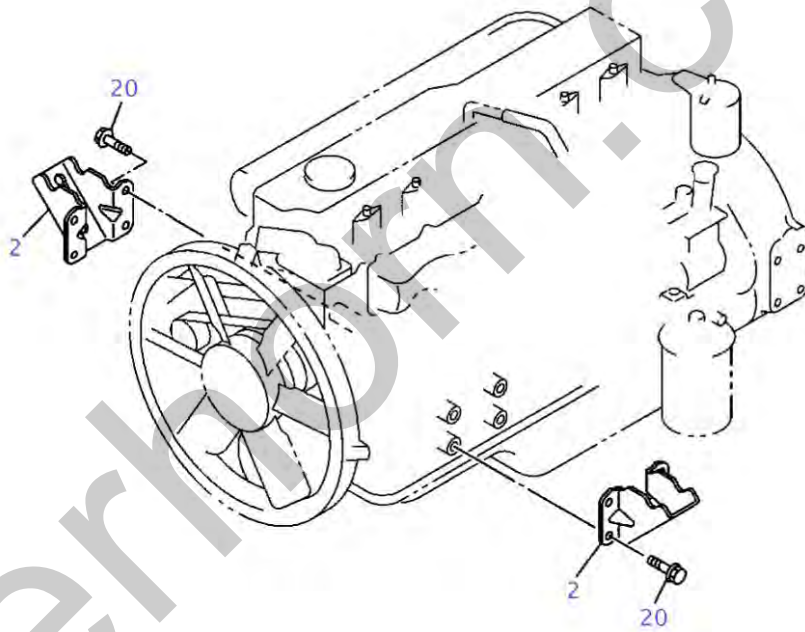


020A0211571

ITEM	PART NO.	PART NAME	QTY	Reference	APPLICABLE NO.
.	.	TIMING GEAR CASE AND FLYWHEEL HOUSING			
2	VI8982349011	HOUSING; FLYWHEEL	1		
16	VI8976011531	GEAR; INJ PUMP DRIVE	1	Z=35	
32	VI8970287481	GASKET; GEAR CASE TO C/BL	1	ID=35.1	
35	VI8976023783	SEAL; OIL, CRANKSHAFT FRT	1	ID=104 OD=137	
35	VI8983344820	SEAL; OIL, CRANKSHAFT FRT	1	ID=104 OD=137	
43	VI1093021121	STUD; BRG COVER	1	M12X15 & M12X33 L=82	
51	VI0280508350	BOLT; GEAR CASE COVER	13	M8X35 FLANGE	
62	VI0280808140	BOLT; COVER	3	M8X14 FLANGE	
68	VI1113211601	COVER ASM; GEAR CASE COVER	1		
94	VI0911802140	NUT; GEAR	1	M14 FLANGE	
115A	VI8976069430	SENSOR; REVOLUTION, ENG SPD	1		
115B	VI8980190240	SENSOR; REVOLUTION, ENG SPD	1		
167	VI1112191630	COVER; OIL	1		
175	VI8972093423	SEAL; OIL, CR/SHF, RR	1		
177A	VI0280506120	BOLT; SENSOR	1	M6X12 FLANGE	
177B	VI0280506160	BOLT; SENSOR	1	M6X16 FLANGE	
177C	VI0280606120	BOLT; SENSOR	1	M6X12 FLANGE	
211A	VI0168562600	BOLT; HSG	1	M12X60	
211B	VI0169562700	BOLT; HSG	11	M12X70	
211C	VI0281510500	BOLT; HSG	1	M10X50 FLANGE	
211D	VI8943939950	BOLT; HSG	1	M14X27 FLANGE	
220	VI0920024120	PLUG; GEAR CHECK HOLE	1	M12X9	
224	VI0440114350	STUD; STARTER	2	M14X35 L=56	
225	VI8972621451	STUD; OIL PAN	4	M8X40 L=52	
225	VI8976684210	STUD; OIL PAN	4	M8X40 L=52	
228	VI0440112350	STUD; AIR CMPR	1	M12X35 L=53	
235	VI8982513440	GASKET; PLUG GEAR CHECK HOLE	1	ID=12.2 OD=17.2	
241	VI8943931401	WASHER; PL, HSG	12	ID=12.5 OD=22	
250	VI0280808180	BOLT; COVER, OIL	2	M8X18 FLANGE	
264	VI0911802120	NUT; COVER	1	M12 FLANGE	
275	VI1113270501	POINTER; TIMING CHECK HOLE	1		
290	VI8971019740	PLUG; SENSOR HOLE	1		
356	VI8943941860	GASKET; COVER	1	ID=110	
479	VI1096235700	GASKET; COVER	1	ID=162	
480	VI0281512700	BOLT; COVER	3	M12X70 FLANGE	
485	VI8973694040	GASKET; SENSOR	2	ID=14.2 OD=18.8	
487A	VI8980238241	COVER; HOLE	1		
487B	VI8976014201	COVER; HOLE	1		
.	.				

ITEM	PART NO.	PART NAME	QTY	Reference	APPLICABLE NO.
0-11	.				
0-12	.				
0-13	.				
0-30	.				
0-31	.				
0-40	.				

Silverhorn.CO.UK

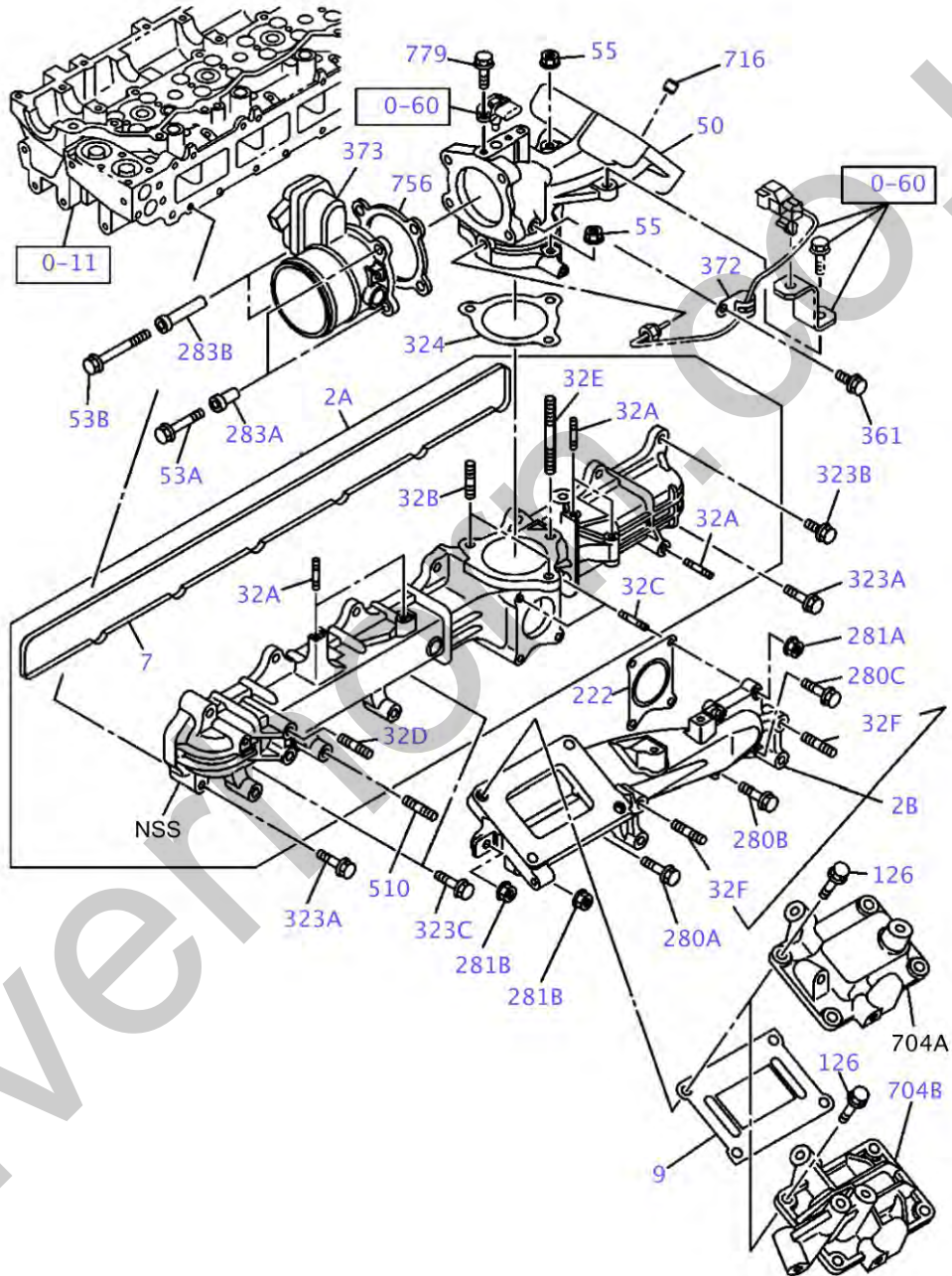


022A0111571

ITEM	PART NO.	PART NAME	QTY	Reference	APPLICABLE NO.
	.	ENGINE MOUNTING			
2	VI8943934911	FOOT; ENG	2		
20	VI8943957210	BOLT; ENG FOOT	8	M10X20 FLANGE	

Silverhorn.CO.UK

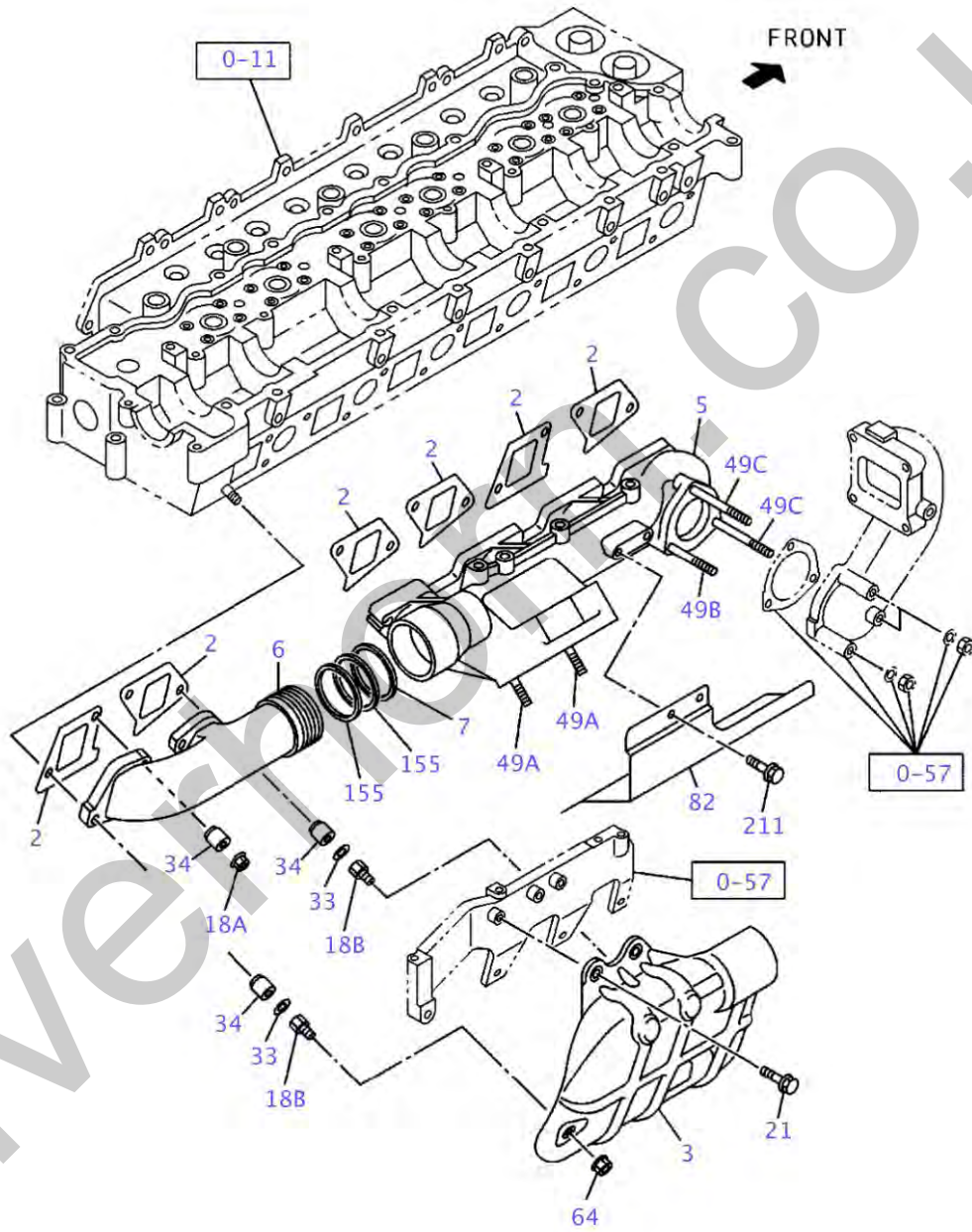
インレット マニホールド ・ INLET MANIFOLD



025A0111571

ITEM	PART NO.	PART NAME	QTY	Reference	APPLICABLE NO.
	.	INLET MANIFOLD			
	.				
2A	VI8982383670	COVER; INL	1		
2B	VI8982401571	COVER; INL	1		
7	VI8943907750	GASKET; INL MANIF TO HD	1		
9	VI8976084230	GASKET; DUCT	1		
32A	VI0410106300	STUD; INL PIPE	5	M6X30 L=38	
32B	VI0410108250	STUD; INL PIPE	2	M8X25 L=37	
32C	VI0410108280	STUD; INL PIPE	2	M8X28 L=40	
32D	VI0440110300	STUD; INL PIPE	1	M10X30 L=45	
32E	VI9096300220	STUD; INL PIPE	1	M8X120 L=133	
32F	VI0440110500	STUD; INL PIPE	2	M10X50 L=65	
50	VI8982366130	PIPE; INL	1		
53A	VI0280508300	BOLT; INL PIPE	2	M8X30 FLANGE	
53B	VI0280508700	BOLT; INL PIPE	2	M8X70 FLANGE	
55	VI0911801080	NUT; INL PIPE	3	M8 FLANGE	
126	VI0287510350	BOLT; COVER	4	M10X35 FLANGE	
222	VI8976059950	GASKET; INL COVER	1	ID=52	
280A	VI0281510300	BOLT; INL COVER	1	M10X30 FLANGE	
280B	VI0286508300	BOLT; INL COVER	1	M8X30 FLANGE	
280C	VI8980347640	BOLT; INL COVER	1	M8X30 FLANGE	
281A	VI0911801080	NUT; INL COVER	2	M8 FLANGE	
281B	VI0911801100	NUT; INL COVER	2	M10 FLANGE	
283A	VI8972196500	RUBBER	2	L=18	
283B	VI8973879951	RUBBER	2	L=58	
323A	VI0280508500	BOLT; DUCT	6	M8X50 FLANGE	
323B	VI0286508250	BOLT; DUCT	6	M8X25 FLANGE	
323C	VI8972293171	BOLT; DUCT	2	M8X48 FLANGE	
324	VI8976017770	GASKET; INL PIPE TO INL CVR	1	ID=78	
361	VI0280506120	BOLT; CLIP	1	M6X12 FLANGE	
372	VI8941781080	CLIP; HOSE	1	ID=21 L=47.5	
373	VI8981008994	THROTTLE ASM; INT	1		
510	VI0440110300	STUD; INL DUCT	1	M10X30 L=45	
704B	VI8982366640	COVER	1		
716	VI9113190653	DOWEL; DUCT	2	OD=14 L=10	
756	VI8973870090	GASKET; INTAKE, THROTTLE	1	ID=88	
779	VI0280506120	BOLT; SENSOR	2	M6X12 FLANGE	
	.				
0-11	.				
0-60	.				

エキゾースト マニホールド ・ EXHAUST MANIFOLD

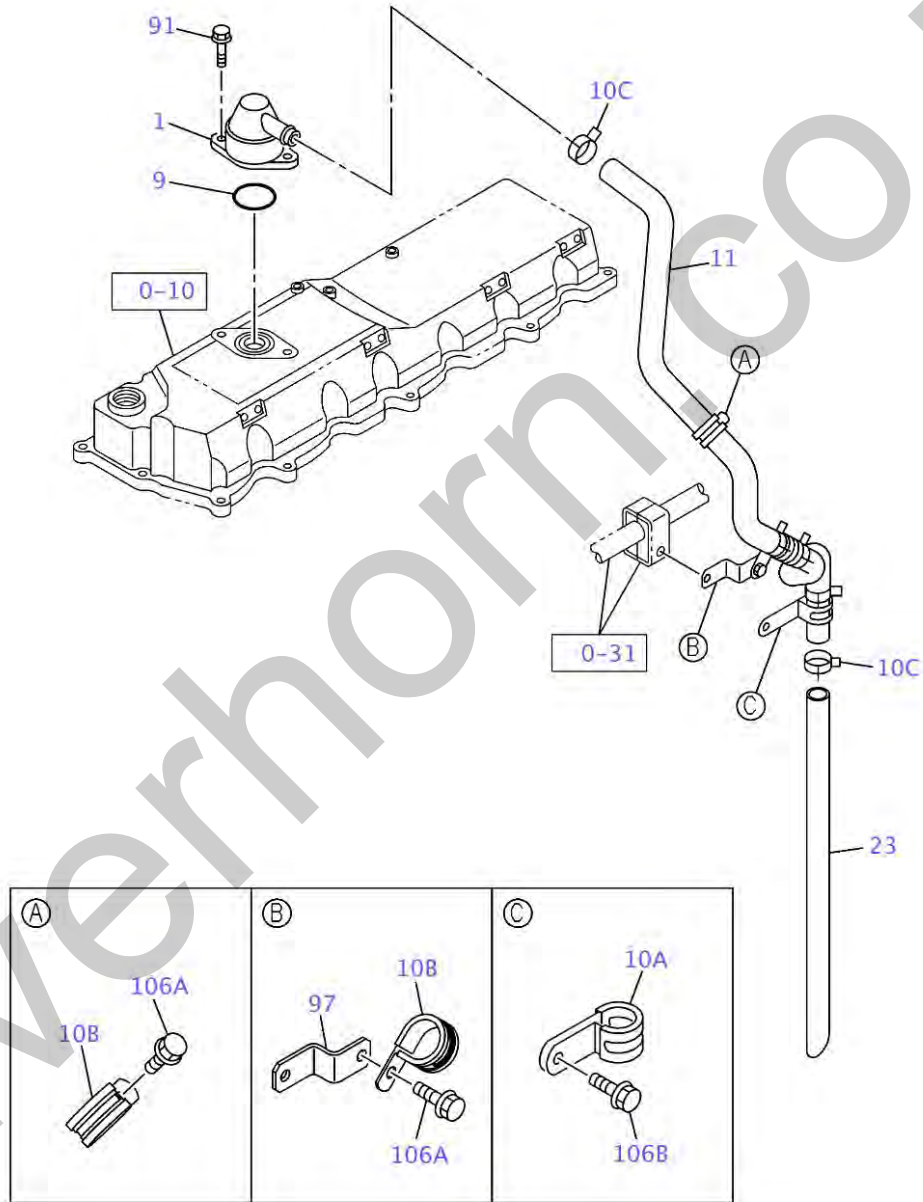


027A0111571

ITEM	PART NO.	PART NAME	QTY	Reference	APPLICABLE NO.
	.	EXHAUST MANIFOLD			
	.				
2	VI8943936724	GASKET; EXH MANIF TO HD	6		
3	VI8982053950	PROTECTOR; HEAT, EXH MANIF	1		
5	VI8981063621	MANIFOLD; EXH, FRT	1		
6	VI8976049440	MANIFOLD; EXH, RR	1		
7	VI1141491510	RING; SEAL, EXH MANIF	1	STAMP RH	
18A	VI0913700100	NUT; EXH MANIF	10	M10 LOCK NUT	
18B	VI8982053940	NUT; EXH MANIF	2	M10 L=51	
21	VI0280508160	BOLT; HEAT PROTECTOR	2	M8X16 FLANGE	
33	VI1095560150	WASHER; EXH MANIF	2	T=2.2	
34	VI8972500731	COLLAR; DIST, EXH MANIF	12	L=28	
49A	VI8943835960	STUD; CENTER MANIF TO TURBOCHARGER	2	M10X35 L=50	
49B	VI8973780730	STUD; CENTER MANIF TO TURBOCHARGER	1	M10X60 L=75	
49C	VI8980484460	STUD; CENTER MANIF TO TURBOCHARGER	2	M10X70 L=83	
64	VI0911802100	NUT; HEAT PROTECTOR	2	M10 FLANGE	
82	VI8981633681	COVER; RR EXH MANIF	1		
155	VI1141491840	RING; SEAL, EXH MANIF	2		
211	VI8973780750	BOLT; COVER	5	M8X14 FLANGE	
	.				
0-11	.				
0-57	.				

ベネレーション システム ・ VENTILATION SYSTEM

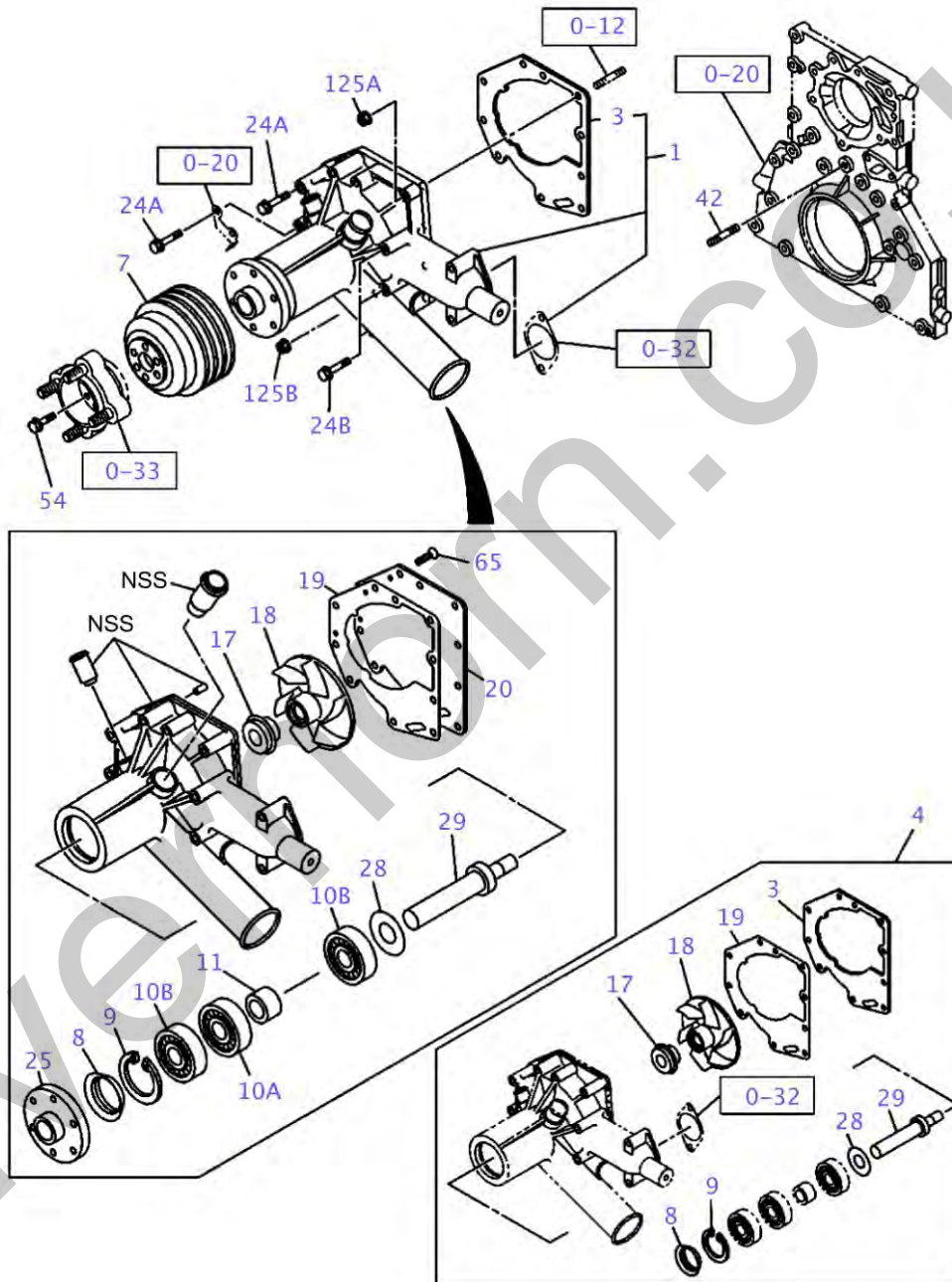
EXC. XAGD01



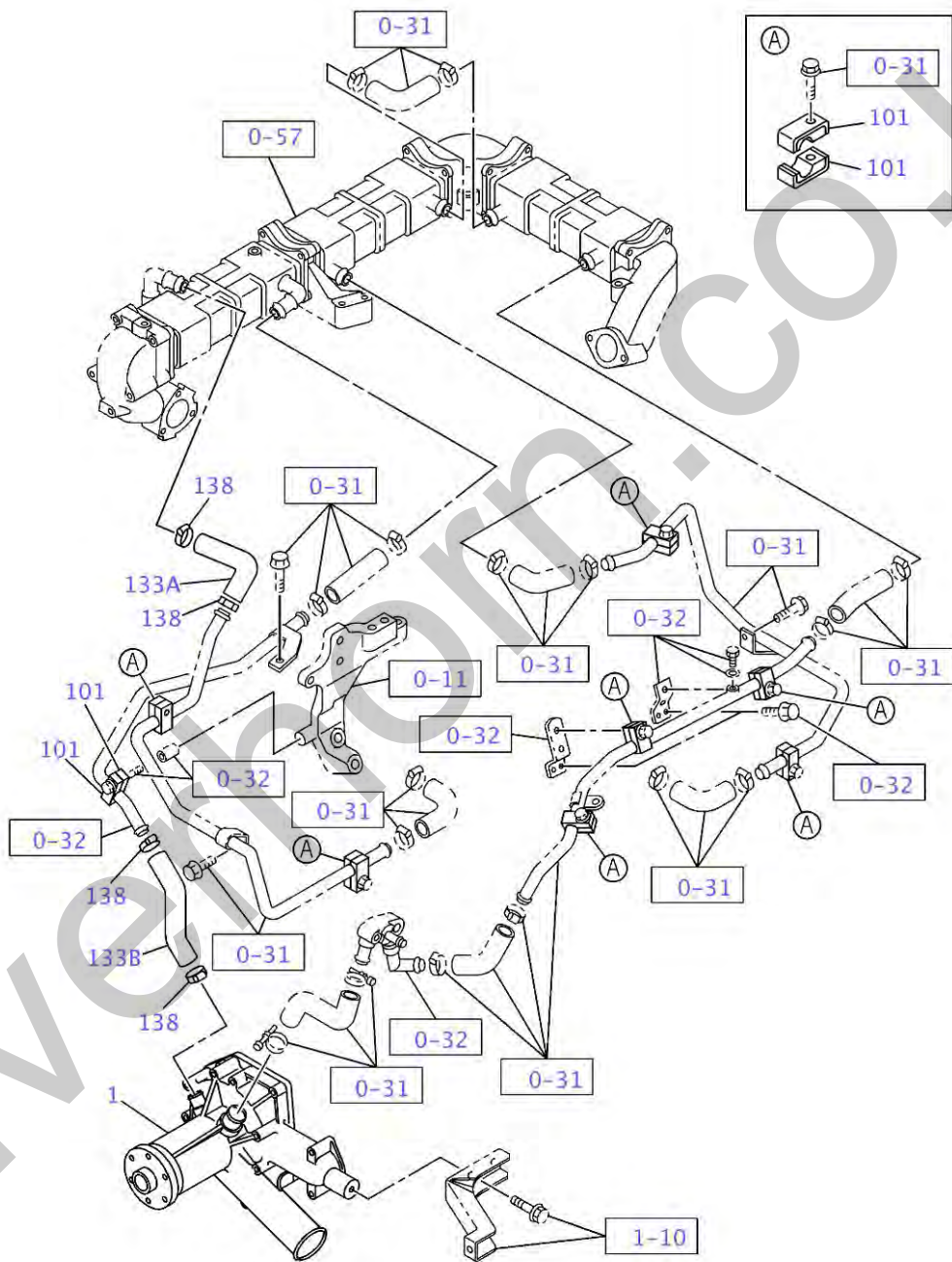
028A0111571

ITEM	PART NO.	PART NAME	QTY	Reference	APPLICABLE NO.
	.	VENTILATION SYSTEM			
1	VI1117402690	BREATHING; AIR	1		
9	VI1096235650	GASKET; AIR BREATHING	1	ID=59.6	
10A	VI1097007041	CLIP; AIR BREATHING	1	ID=32 L=75	
10B	VI1097009450	CLIP; AIR BREATHING	2	ID=35 L=33	
10C	VI1097071500	CLIP; AIR BREATHING	2	ID=28.5	
11	VI8982422120	HOSE; RUBBER, AIR	1		
23	VI8982596160	HOSE; RUBBER, VENTILATOR PIPE	1	L=700	1403-
91	VI0281510200	BOLT; AIR BREATHING	2	M10X20 FLANGE	
97	VI1534586410	BRACKET; HOSE	1		
106A	VI0280508160	BOLT; DRAIN PIPE	2	M8X16 FLANGE	
106B	VI0281510200	BOLT; DRAIN PIPE	1	M10X20 FLANGE	
0-10	.				
0-31	.				

ウォーターポンプ アンド コロシヨン レジスタ ・ WATER PUMP AND CORROSION RESISTOR



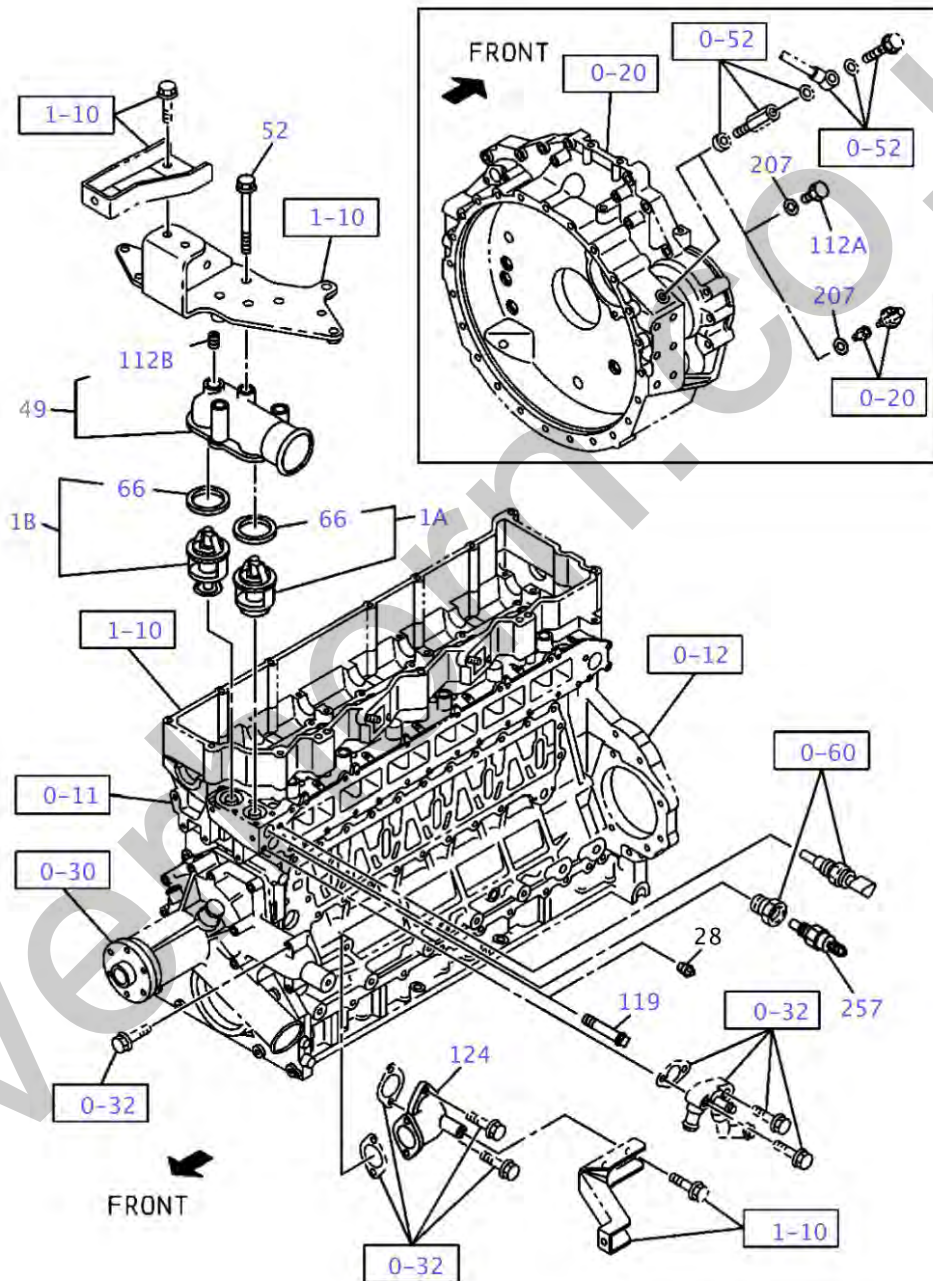
030A0111571



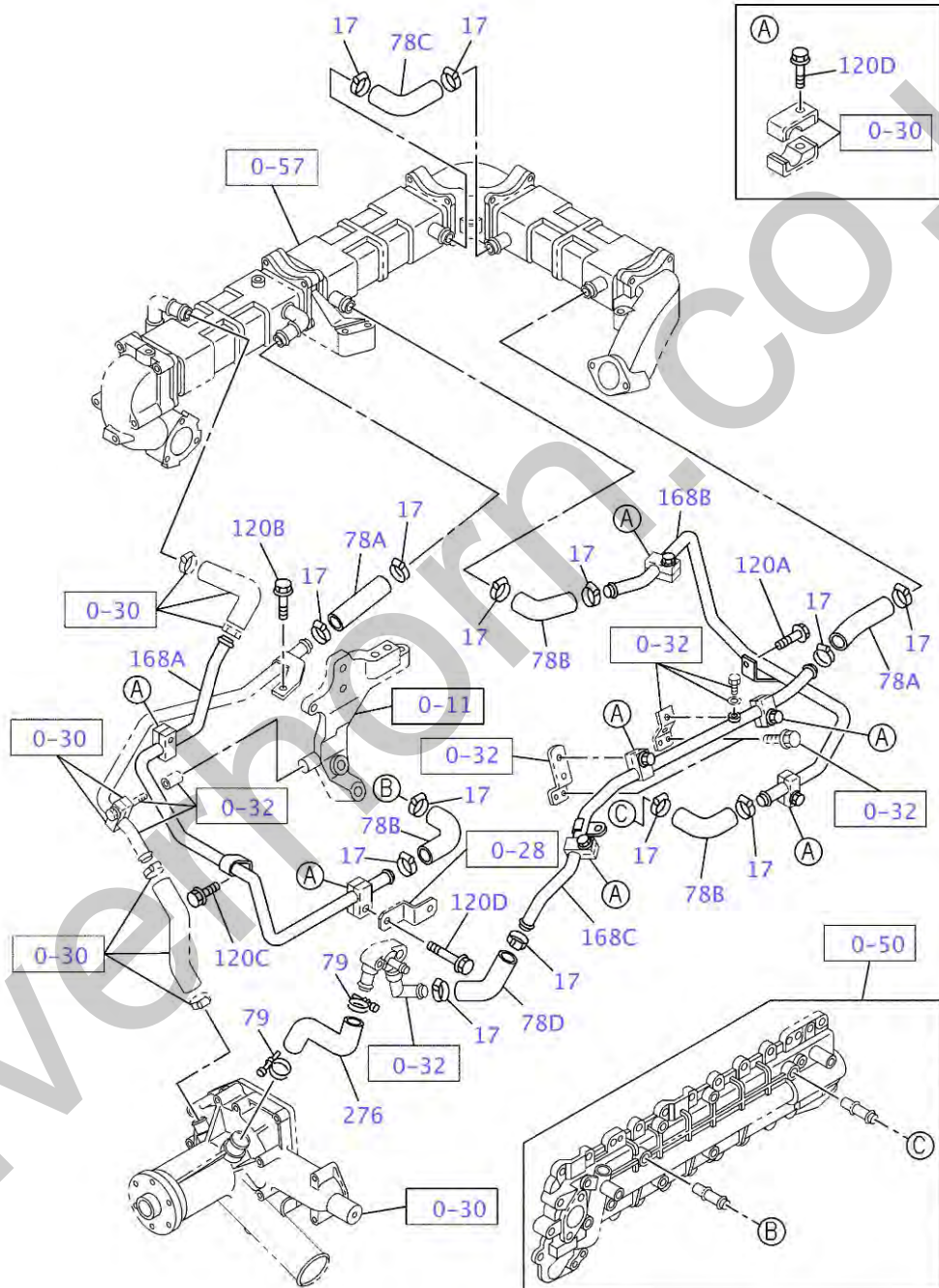
030A0211571

ITEM	PART NO.	PART NAME	QTY	Reference	APPLICABLE NO.
	.	WATER PUMP AND CORROSION RESISTOR			
1	VI1873104870	PUMP ASM; WATER, W/GASKET	1		
3	VI1136140211	GASKET; PUMP TO C/BL	1		
4	VI1878136630	REPAIR KIT; WATER PUMP	1		
7	VI1136412211	PULLEY; WATER PUMP	1		
8	VI1136390290	THROWER; DUST, WATER PUMP	1		
9	VI9091801680	RING; SNAP, WATER PUMP	1	OD=72.5	
10A	VI1098003020	BEARING; WATER PUMP	1		
10B	VI1098003030	BEARING; WATER PUMP	2		
11	VI1136340440	SPACER; BRG, WATER PUMP	1		
17	VI8943920900	SEAL UNIT; WATER PUMP	1		
18	VI1136210610	IMPELLER; WATER PUMP	1		
19	VI8981804980	GASKET; COVER TO BODY	1		
20	VI8981866300	COVER; WATER PUMP	1		
24A	VI0280508800	BOLT; WATER PUMP	5	M8X80 FLANGE	
24B	VI0280558110	BOLT; WATER PUMP	3	M8X110 FLANGE	
25	VI1136420810	CENTER; WATER PUMP	1		
28	VI1095033090	WASHER; WATER PUMP	1		
29	VI1136310930	SHAFT; WATER PUMP	1		
42	VI0410108550	STUD; WATER PUMP	1	M8X55 L=67	
54	VI0280510800	BOLT; PULLEY	6	M10X80 FLANGE	
65	VI9030908200	SCREW; COVER, WATER PUMP	2	M8X20 CK- HEAD	
101	VI8976033621	CLIP; WATER PIPE	16	ID=24.5 L=22	
125B	VI0911801080	NUT; WATER PUMP	1	M8 FLANGE	
125A	VI0911801100	NUT; WATER PUMP	1	M10 FLANGE	
133A	VI8981261860	HOSE; RUBBER, WATER PIPE	1		
133B	VI8981344931	HOSE; RUBBER, WATER PIPE	1		
138	VI1097071320	CLIP; RUBBER HOSE	4	ID=26-41.5	
0-11	.				
0-12	.				
0-20	.				
0-31	.				
0-32	.				
0-33	.				
0-57	.				
1-10	.				

サーモスタット アント ハウジング ・ THERMOSTAT AND HOUSING



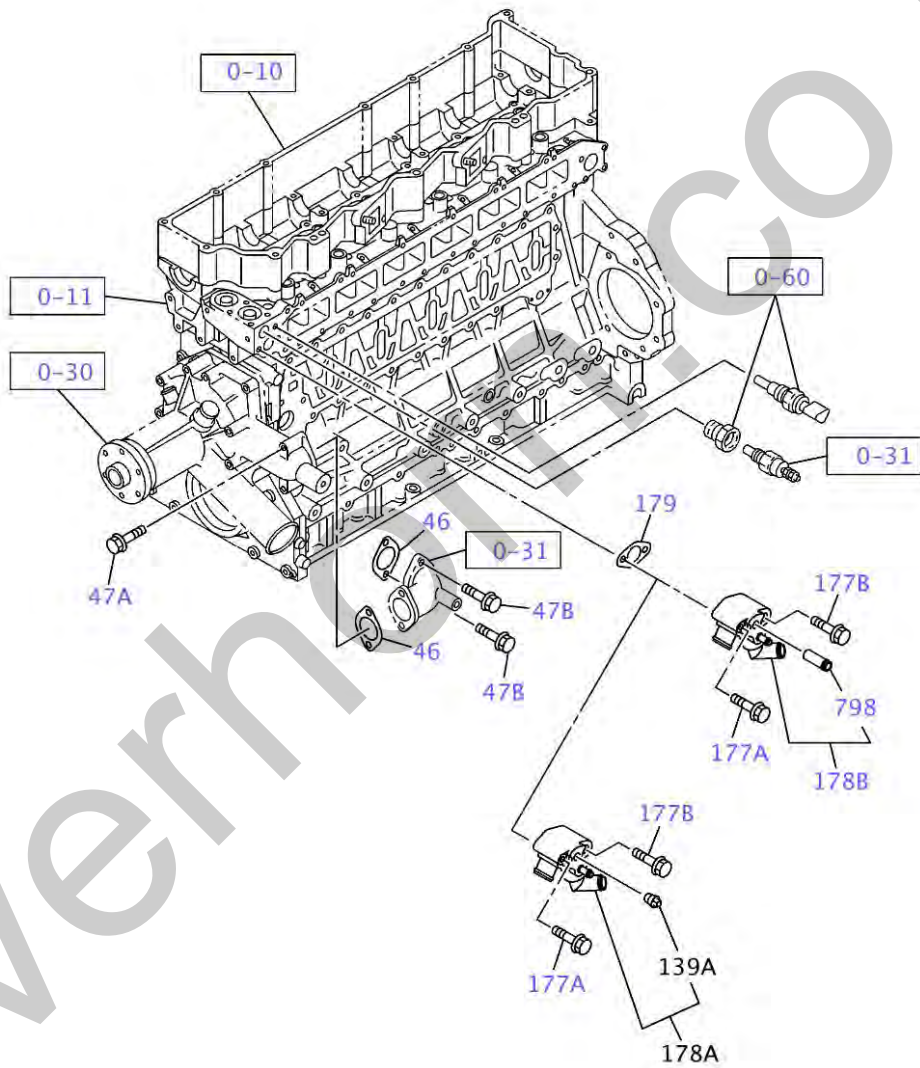
031A0111571



031A0211571

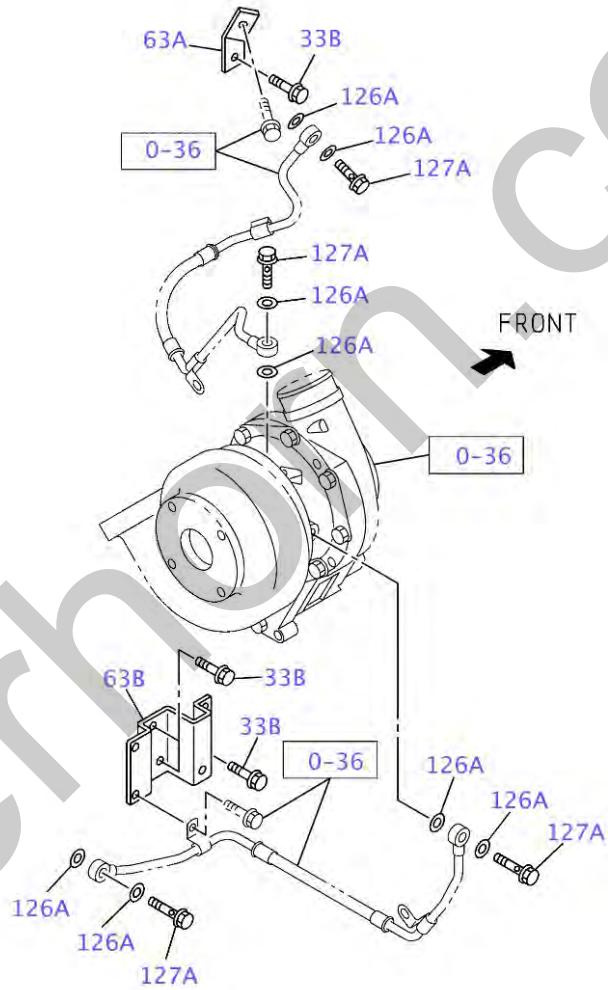
ITEM	PART NO.	PART NAME	QTY	Reference	APPLICABLE NO.
	.	THERMOSTAT AND HOUSING			
	.				
1A	VI8976020353	THERMOSTAT	1	76.5 CELSIUS	
1B	VI8981587781	THERMOSTAT	1	80 CELSIUS	
17	VI1097071320	CLIP; WATER HOSE	14	ID=26-41.5	
49	VI8943905201	PIPE; WATER OUTLET	1		
52	VI0280558110	BOLT; JOINT, THERMOSTAT	4	M8X110 FLANGE	
66	VI8982802810	GASKET; THERMOSTAT HSG	2	ID=49.5 OD=56.5	
78A	VI8980966600	HOSE; RUBBER, WATER PIPE	2		
78B	VI8981231610	HOSE; RUBBER, WATER PIPE	3		
78C	VI8981231620	HOSE; RUBBER, WATER PIPE	1		
78D	VI8981519310	HOSE; RUBBER, WATER PIPE	1		
79	VI1097040770	CLIP; RUBBER HOSE	2	ID=44	
112B	VI8943905270	PLUG	1	PTF1/2	
112A	VI0920024120	PLUG	1	M12X9	
119	VI1096605041	PIPE; HTR	1		
120A	VI0280508120	BOLT; PIPE FIX	1	M8X12 FLANGE	
120B	VI0280508160	BOLT; PIPE FIX	1	M8X16 FLANGE	
120C	VI0281510120	BOLT; PIPE FIX	1	M10X12 FLANGE	
120D	VI8944584741	BOLT; PIPE FIX	7	M8X53 FLANGE	
124	VI1137118062	DUCT; WATER	1		
168A	VI8981229450	PIPE; WATER, COOLER	1		
168B	VI8981229470	PIPE; WATER, COOLER	1		
168C	VI8981229483	PIPE; WATER, COOLER	1		
207	VI8944725841	GASKET	1	T=2.5	
257	VI8971256011	SWITCH; WARNING, OVER HEAT	1		
276	VI1093610351	HOSE; BYPASS	1		
	.				
0-11	.				
0-12	.				
0-20	.				
0-28	.				
0-30	.				
0-32	.				
0-50	.				
0-52	.				
0-57	.				
0-60	.				
1-10	.				

ウォーターパイピング; エンジン・WATER PIPING; ENGINE

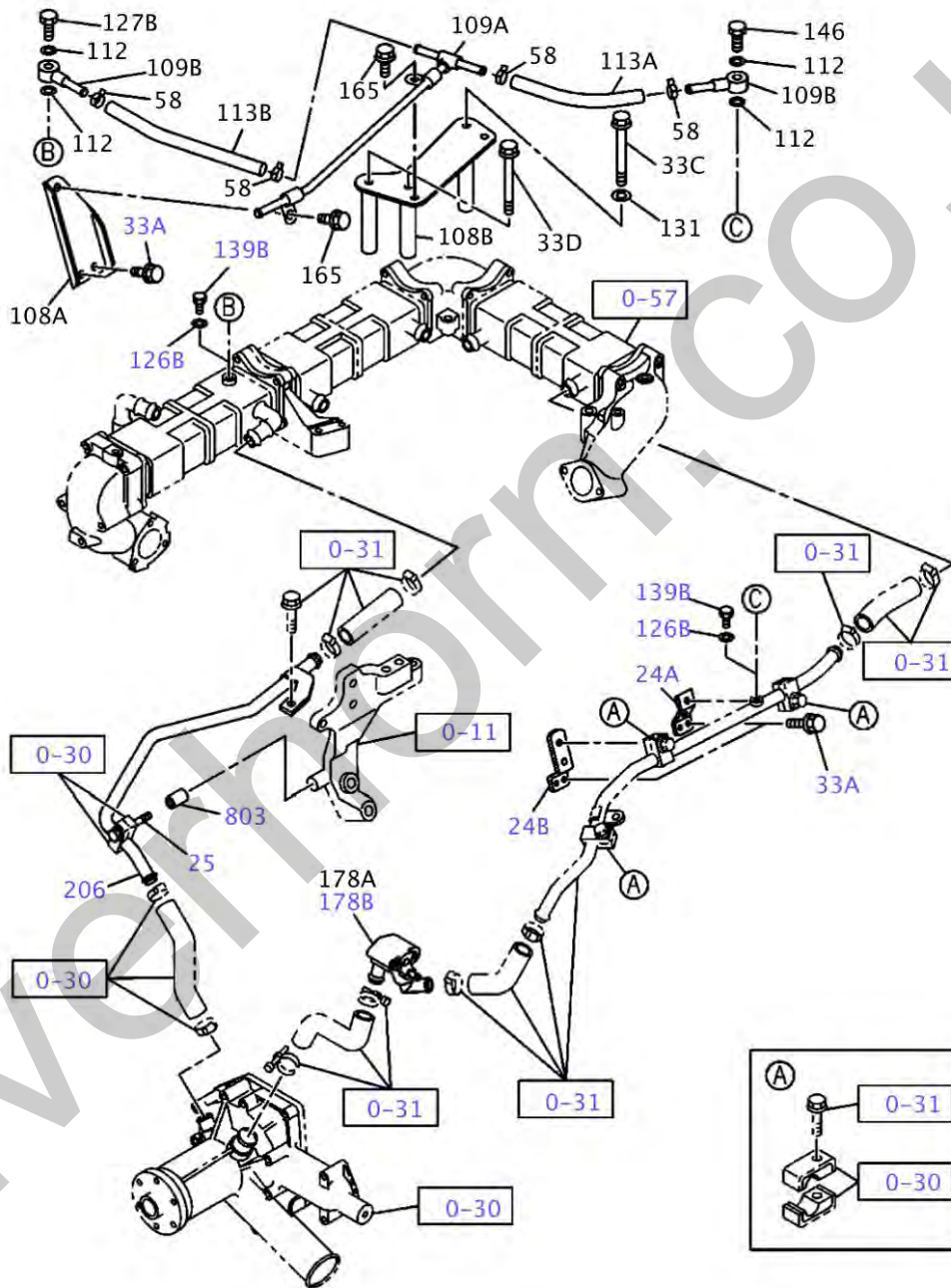


032A0111571

Silverbrook CO. UK



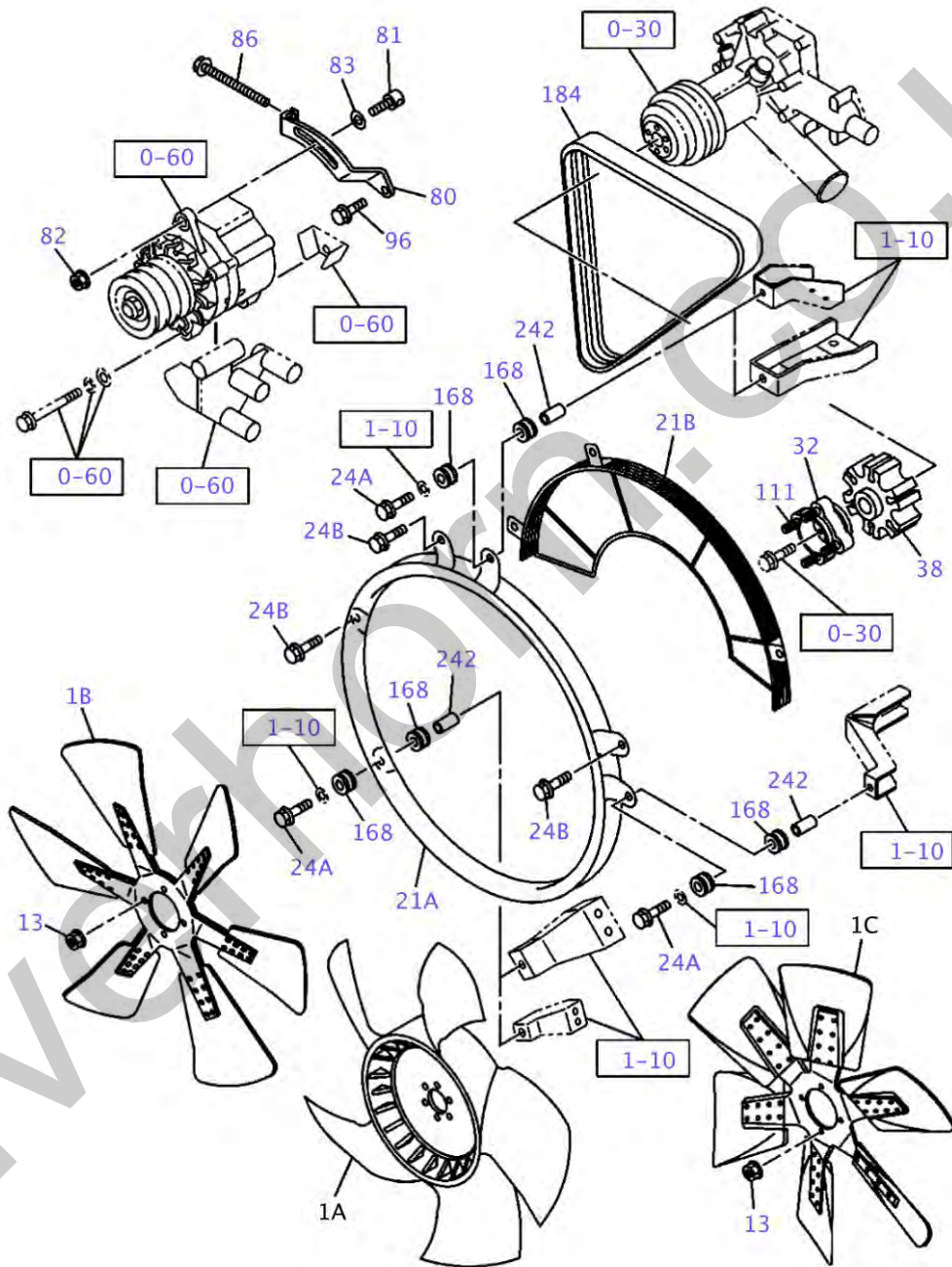
032A0211571



032A0311571

ITEM	PART NO.	PART NAME	QTY	Reference	APPLICABLE NO.
	.	WATER PIPING; ENGINE			
	.				
24A	VI8980256830	BRACKET; WATER PIPE	1		
24B	VI8981633980	BRACKET; WATER PIPE	1		
25	VI0280508900	BOLT; WATER PIPE	1	M8X90 FLANGE	
33A	VI0280508120	BOLT; BRKT	4	M8X12 FLANGE	
33B	VI0280508160	BOLT; BRKT	4	M8X16 FLANGE	
46	VI1136140231	GASKET; WATER DUCT, TO OIL COOLER	2		
47A	VI0280508600	BOLT; DUCT, TO OIL COOLER	2	M8X60 FLANGE	
47B	VI0286508250	BOLT; DUCT, TO OIL COOLER	2	M8X25 FLANGE	
63A	VI8980467840	BRACKET; WATER PIPE	1		
63B	VI8981144380	BRACKET; WATER PIPE	1		
126A	VI1096301410	GASKET; CAP NUT	8	ID=14.2 OD=25	
126B	VI9095714100	GASKET; CAP NUT	2	ID=10.2 OD=16	
127A	VI1096751930	BOLT; EYE	4	M14X27 EYE- BOLT	
139B	VI8980727120	PLUG; WATER PIPE	2		
177A	VI0280508700	BOLT; WATER DUCT	1	M8X70 FLANGE	
177B	VI0288616700	BOLT; WATER DUCT	1	M16X70 FLANGE	
178B	VI8982366030	DUCT; WATER, BYPASS	1		
179	VI1136140241	GASKET; WATER DUCT	1		
206	VI8981229460	PIPE; WATER, EGR COOLER	1		
798	VI9099036310	PIPE; HEATER	1	PT3/8 & OD=18.3 L=47	
803	VI5154190360	SPACER	1	ID=9 OD=16 L=40	
	.				
0-10	.				
0-11	.				
0-30	.				
0-31	.				
0-36	.				
0-57	.				
0-60	.				

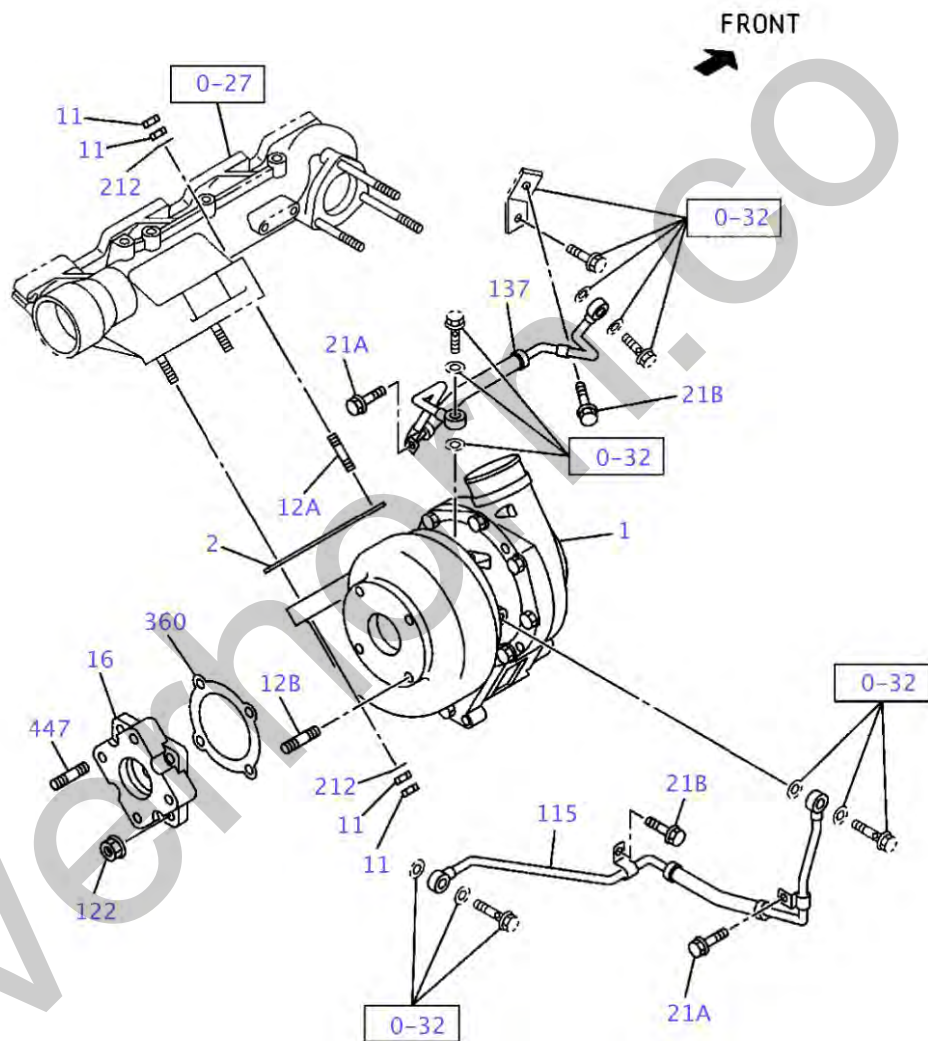
ファン アンド ファン ベルト ・ FAN AND FAN BELT



033A0111571

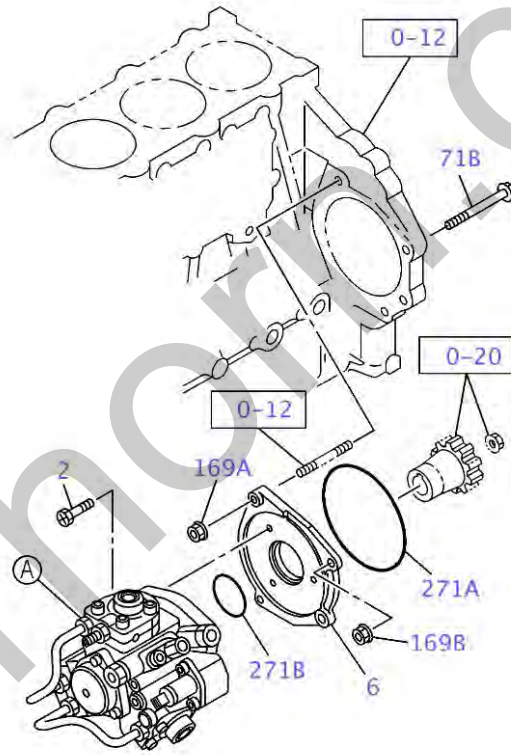
ITEM	PART NO.	PART NAME	QTY	Reference	APPLICABLE NO.
	.	FAN AND FAN BELT			
1B	VI1136603322	FAN; COOLING	1	D=850-6 SUCTION	
13	VI0911801100	NUT; COOLING FAN	4	M10 FLANGE	
21A	VI1215514850	GUIDE; FAN	1		
21B	VI1215514861	GUIDE; FAN	1		
24A	VI0280510450	BOLT; FAN	3	M10X45 FLANGE	
24B	VI0286510250	BOLT; FAN	3	M10X25 FLANGE	
32	VI1136420770	ADAPTER; FAN TO PULLEY	1		
38	VI8980352350	SPACER; FAN	1		
80	VI1136742821	PLATE; ADJ	1		
81	VI1136741600	PIECE; SLIDING	1	M12X45	
82	VI0911801120	NUT; ADJ PLATE	1	M12 FLANGE	
83	VI8942173630	WASHER; PL	1	ID=12.5 T=5.8	
86	VI1090091141	BOLT; ADJ	1	M10X155 FLANGE	
96	VI0281510450	BOLT; ADJ PLATE	1	M10X45 FLANGE	
111	VI0431110250	STUD; FAN DRIVE	4	M10X25 L=45	
168	VI1093370170	RUBBER; MTG	6		
184	VI1136715160	BELT; WATER PUMP DRIVE	1	L=1240 SCRUM TYPE	
242	VI8982266410	TUBE; DISTANCE	3		
0-30	.				
0-60	.				
1-10	.				

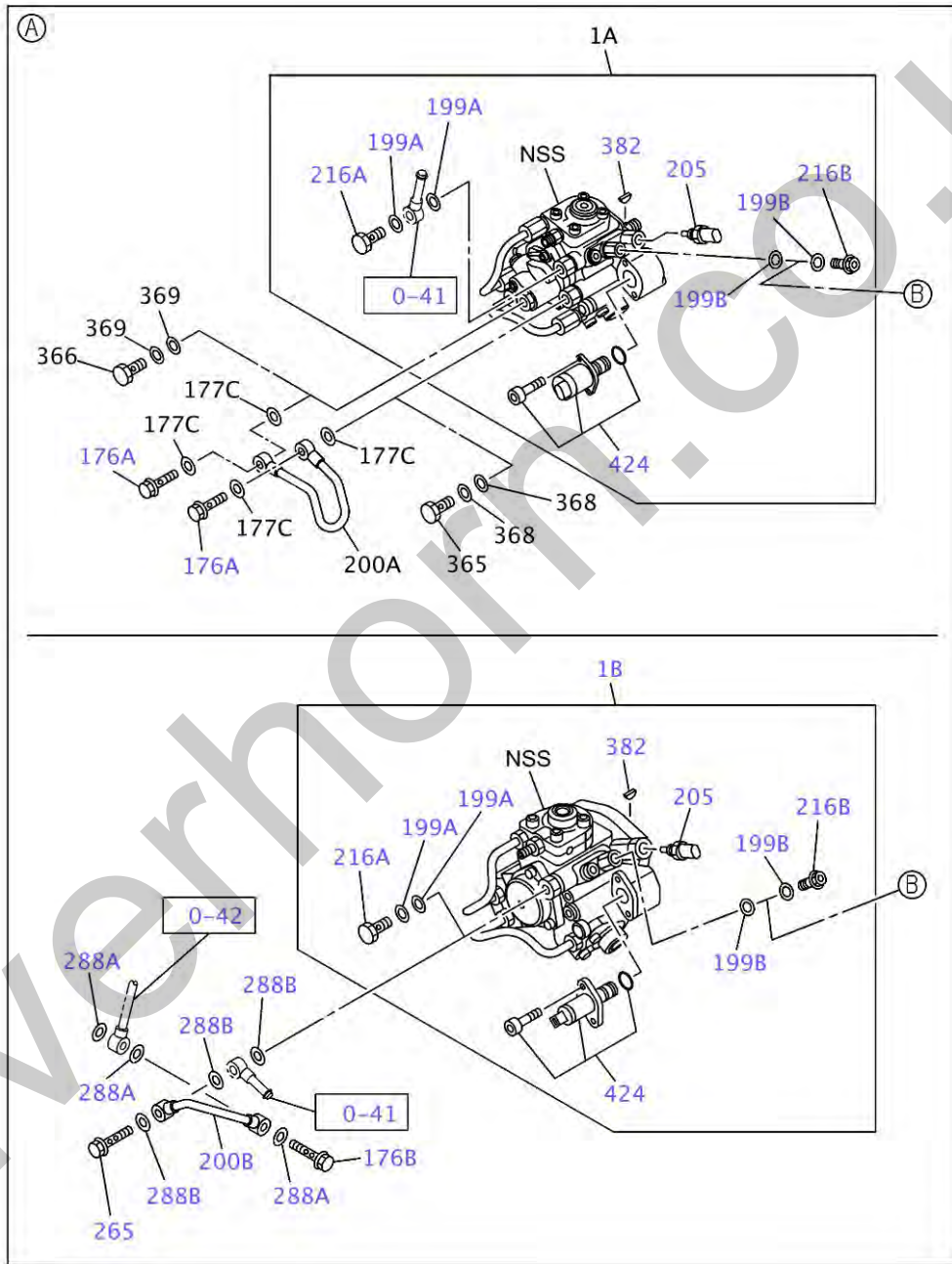
ターボチャージャーシステム・TURBOCHARGER SYSTEM



036A0111571

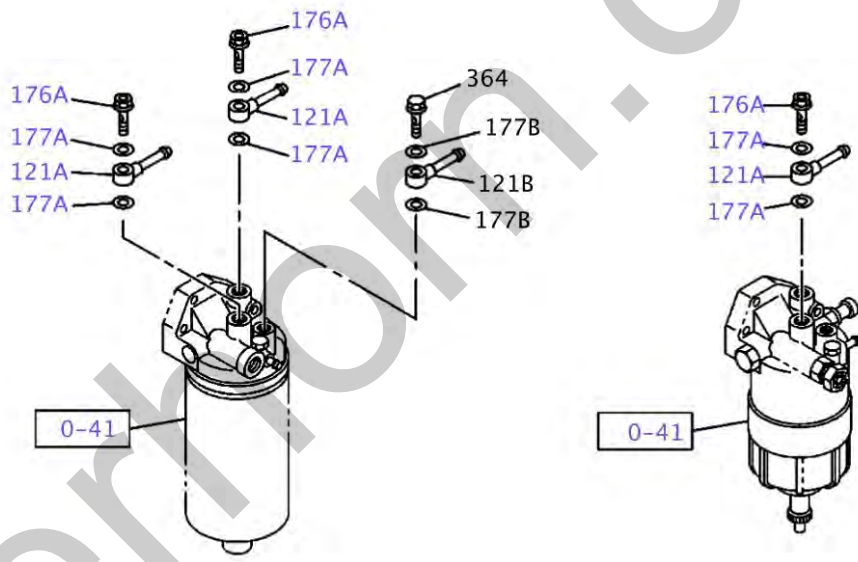
ITEM	PART NO.	PART NAME	QTY	Reference	APPLICABLE NO.
	.	TURBOCHARGER SYSTEM			
	.				
1	VI8982609301	TURBOCHARGER ASM	1		
2	VI8970241240	GASKET; TURBOCHARGER TO EXH MANIF	1		
11	VI1094000270	NUT; TURBOCHARGER	8		
12A	VI8980484460	STUD; TURBOCHARGER	2	M10X70 L=83	
12B	VI9041308250	STUD; TURBOCHARGER	4	M8X25	
16	VI8981270441	ADAPTER; EXH PIPE	1		
21A	VI0280508120	BOLT; PIPE	2	M8X12 FLANGE	
21B	VI0280508160	BOLT; PIPE	2	M8X16 FLANGE	
115	VI8981069091	PIPE; WATER, TURBOCHARGER OUT	1		
122	VI8970614011	NUT; ADAPTER	4	M8 FLANGE	
137	VI8981069100	PIPE; WATER, TURBOCHARGER IN	1		
212	VI1095030331	WASHER; PL, TURBOCHARGER	4	ID=10	
360	VI8943925532	GASKET; ADAPTER TO TURBOCHARGER	1	ID=83	
447	VI9041308250	STUD; ADAPTER	4	M8X25	
	.				
0-27	.				
0-32	.				





040A0211571

SilverStone.CO.UK

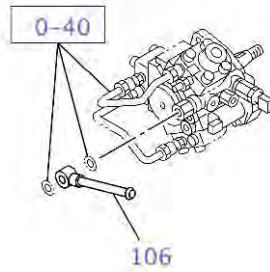
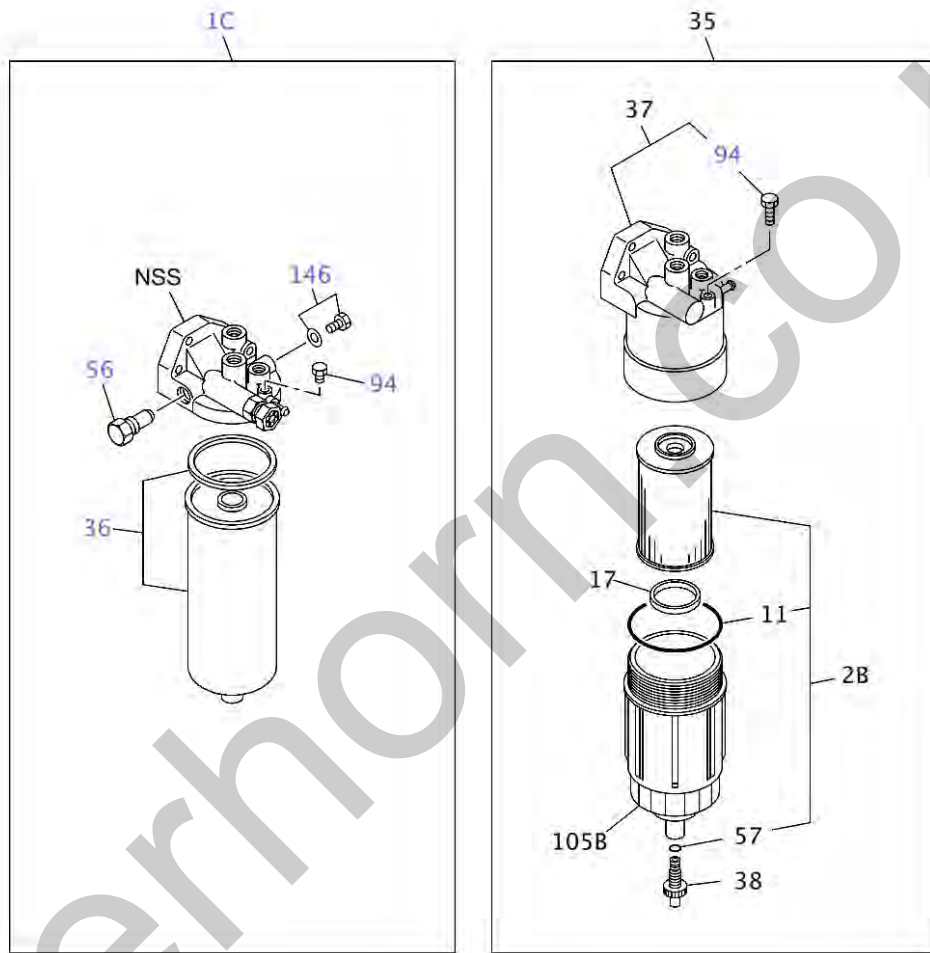


040A0411571

ITEM	PART NO.	PART NAME	QTY	Reference	APPLICABLE NO.
	.	FUEL INJECTION SYSTEM			
1B	VI8976059468	PUMP ASM; INJ	1		
2	VI8943992560	BOLT; INJ PUMP	3	M8X28	
6	VI8976011541	BRACKET; INJ PUMP TO C/BL	1		
16	VI8982712070	PIPE; INJ NO.1	1		
16	VI8976485730	PIPE; INJ NO.1	1		
17	VI8982712080	PIPE; INJ NO.2	1		
17	VI8976485740	PIPE; INJ NO.2	1		
18	VI8982712090	PIPE; INJ NO.3	1		
18	VI8976485750	PIPE; INJ NO.3	1		
19	VI8982712100	PIPE; INJ NO.4	1		
19	VI8976485760	PIPE; INJ NO.4	1		
20	VI8982712110	PIPE; INJ NO.5	1		
20	VI8976485770	PIPE; INJ NO.5	1		
21	VI8982712120	PIPE; INJ NO.6	1		
21	VI8976485780	PIPE; INJ NO.6	1		
31	VI8982384632	NOZZLE ASM; INJ	6		1403-
61	VI8980088950	BOLT; CLAMP NOZZLE HOLDER	6	M8X54	
66A	VI8941734120	GASKET; INJ NOZZLE	6	ID=23.3	
66B	VI8980792480	GASKET; INJ NOZZLE	6	ID=9.2 T=8.1	
68A	VI8980000102	CLIP; INJ PIPE	1	ID=7 & 9 L=25	
68B	VI8980000112	CLIP; INJ PIPE	1	ID=7 & 9 L=25	
68C	VI8981489962	CLIP; INJ PIPE	14	ID=11 & 11 L=19	
69A	VI1133190650	BRACKET; INJ PIPE CLIP	1		
69B	VI8980389400	BRACKET; INJ PIPE CLIP	1		
69C	VI8980490150	BRACKET; INJ PIPE CLIP	1		
71A	VI0280508700	BOLT; BRKT	1	M8X70 FLANGE	
71B	VI0281512000	BOLT; BRKT	1	M12X100 FLANGE	
71C	VI0280508160	BOLT; BRKT	2	M8X16 FLANGE	
94	VI8980289991	BRACKET; INJ NOZZLE	6		
99	VI0280506350	BOLT; CLIP, INJ, PIPE	3	M6X35 FLANGE	
110	VI0911801060	NUT; CLIP	4	M6 FLANGE	
118	VI0286506350	BOLT; CLIP, INJ PIPE	1	M6X35 FLANGE	
121A	VI8973834270	PIPE; FUEL, FEED PUMP, SUCTION	1		
133	VI8982037051	PIPE; INJ NOZZLE LEAK OFF	1		
134A	VI1096750371	BOLT; JOINT, LEAK OFF PIPE	6	M8X18 EYE- BOLT	
134B	VI8943967110	BOLT; JOINT, LEAK OFF PIPE	2	M10X21 EYE- BOLT	
135A	VI8980659920	GASKET; JOINT BOLT, LEAK OFF PIPE	6	ID=8.3 OD=15	
135B	VI8980797550	GASKET; JOINT BOLT, LEAK OFF PIPE	1	ID=10.2 OD=17	
135C	VI8982313931	GASKET; JOINT BOLT, LEAK OFF PIPE	1	ID=10.6	
154	VI0956901110	GASKET; CONNECTOR	6	ID=11.0	

ITEM	PART NO.	PART NAME	QTY	Reference	APPLICABLE NO.
169A	VI0911801100	NUT; BRKT	2	M10 FLANGE	
169B	VI0911801120	NUT; BRKT	1	M12 FLANGE	
176A	VI1096750951	BOLT; EYE, FEED PUMP	1	M16X30 EYE-BOLT	
176B	VI8980112690	BOLT; EYE, FEED PUMP	1	M10X38 EYE-BOLT	
177A	VI1096300860	GASKET; EYE BOLT, INL, FUEL FEED PUMP	3	ID=16.2 OD=22	
199A	VI1156195070	GASKET; EYE BOLT	2	ID=14.2	
199B	VI8976022180	GASKET; EYE BOLT	4		
200B	VI8980087910	PIPE; FUEL FEED	1		
205	VI8980235810	SENSOR; FUEL TEMP	1		
210	VI8981454140	PIPE; INJ, C/R	1		
211	VI8976099803	RAIL ASM; COMMON	1		1403-
212	VI8973722430	BOLT; RAIL ASM	2	M10X50 FLANGE	
216A	VI5157590030	BOLT; EYE	1	M14X26 EYE-BOLT	
216B	VI8973513880	BOLT; EYE	1	M10X23 EYE-BOLT	
216C	VI8980430330	BOLT; EYE	1	M10X23 EYE-BOLT	
265	VI8980749550	VALVE; FEED PUMP	1		
271A	VI1096234640	GASKET; INJ PUMP	1	ID=139.6	
271B	VI8980318440	GASKET; INJ PUMP	1	ID=52	
288A	VI1096300830	GASKET	3	ID=10.2 OD=15.2	
288B	VI8982513450	GASKET	3	ID=14.2 OD=19.2	
288C	VI1156410460	GASKET	1	ID=11 OD=16.3	
289	VI8980325490	LIMITER; FUEL PRESS	1		
290	VI8981197900	SENSOR; PRESS	1		1403-2107
290	VI8975497980	SENSOR; PRESS	1		2108-
382	VI8981619950	KEY; DRIVE SHAFT	1		
392	VI0911801100	NUT; RAIL ASM	2	M10 FLANGE	
424	VI8981454491	OVERHAUL KIT; SUPPLY PUMP	1		
0-11	.				
0-12	.				
0-20	.				
0-25	.				
0-41	.				
0-42	.				

フエルト フィルタ アンド ブラケット・FUEL FILTER AND BRACKET

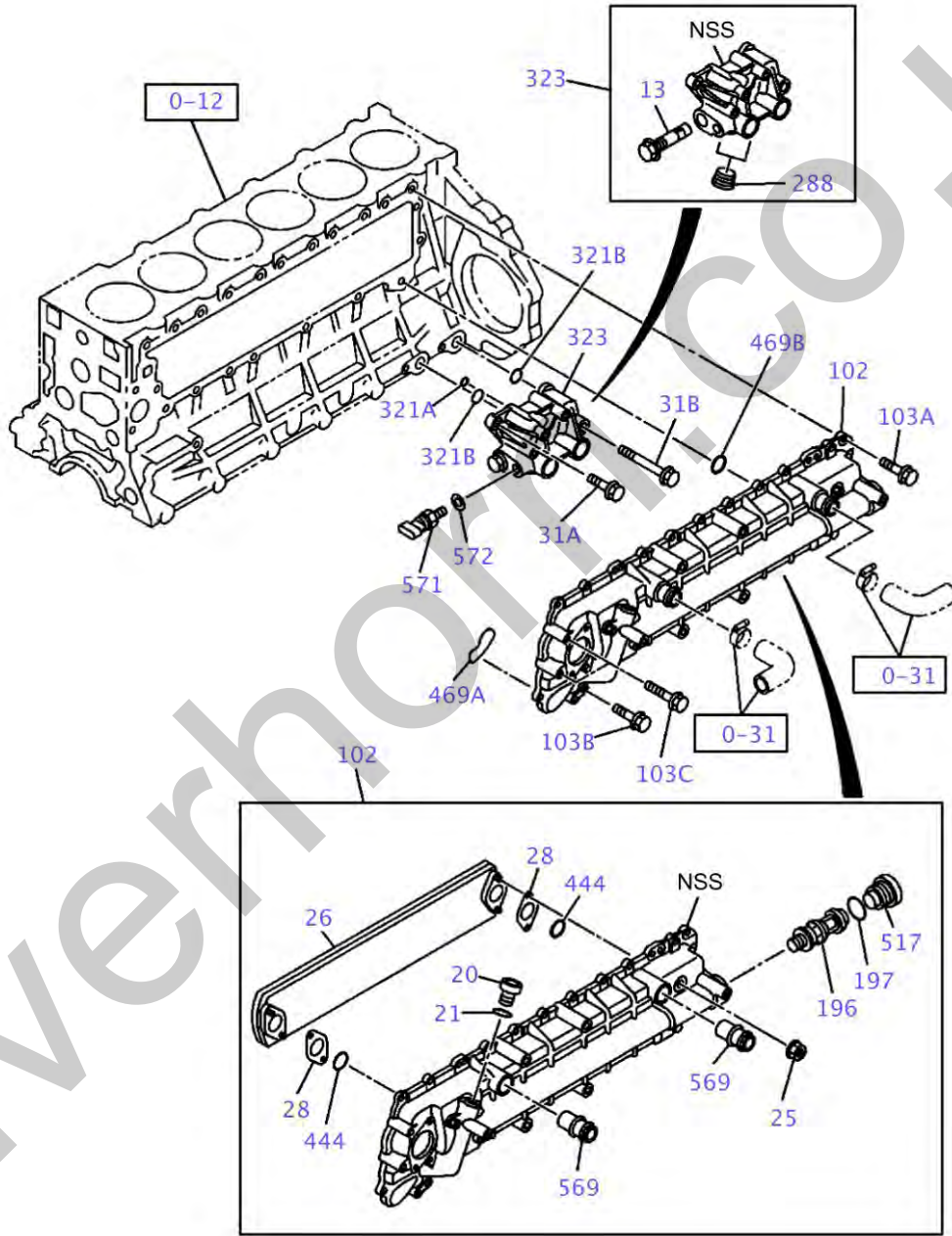


041A0211571

ITEM	PART NO.	PART NAME	QTY	Reference	APPLICABLE NO.
	.	FUEL FILTER AND BRACKET			
	.				
1C	VI8983129151	FILTER ASM; FUEL	1		
36	VI8983129180	ELEMENT; FUEL FILTER	1		
56	VI8980088471	PLUG; FUEL FILTER	1		
94	VI8983673800	VALVE; FUEL FILTER	1		
106	VI8980149030	PIPE; FUEL	1		
146	VI8983354870	PLUG KIT; BODY	1		
	.				
0-40	.				

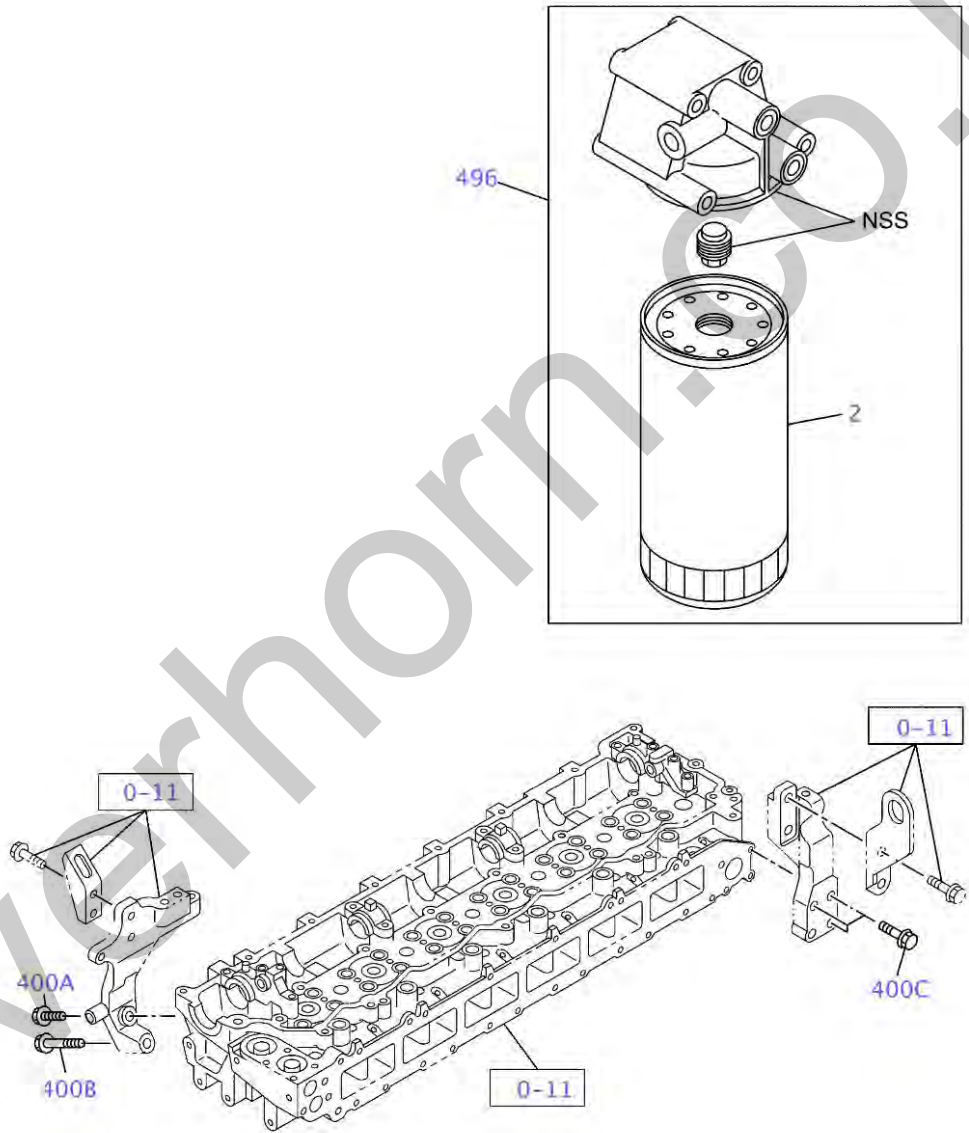
ITEM	PART NO.	PART NAME	QTY	Reference	APPLICABLE NO.
	.	FUEL PUMP AND PIPE			
	.				
144	VI0911801060	NUT; CLIP	1	M6 FLANGE	
145A	VI8972161886	CLIP; FUEL PIPE	1	ID=12 & 9 L=31.5	
145B	VI8980000102	CLIP; FUEL PIPE	1	ID=7 & 9 L=25	
145C	VI8980000112	CLIP; FUEL PIPE	1	ID=7 & 9 L=25	
146	VI8976010080	BRACKET; FUEL END	1		
147	VI0286506350	BOLT; CLIP, FUEL PIPE	1	M6X35 FLANGE	
148	VI0280508120	BOLT; BRKT	1	M8X12 FLANGE	
258	VI8982374150	PIPE ASM; FUEL, LEAK OFF	1		
	.				
0-11	.				
0-40	.				

オイルクーラント オイルフィルタ・OIL COOLER AND OIL FILTER



050A0111571

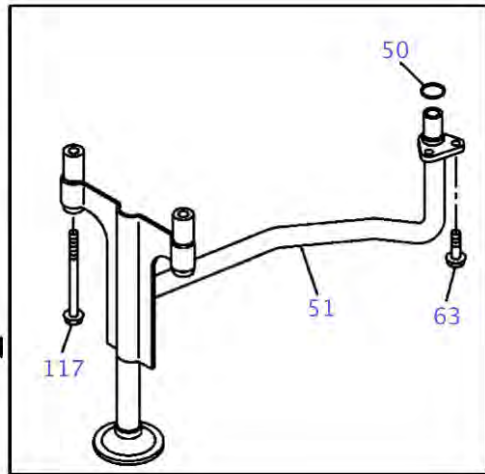
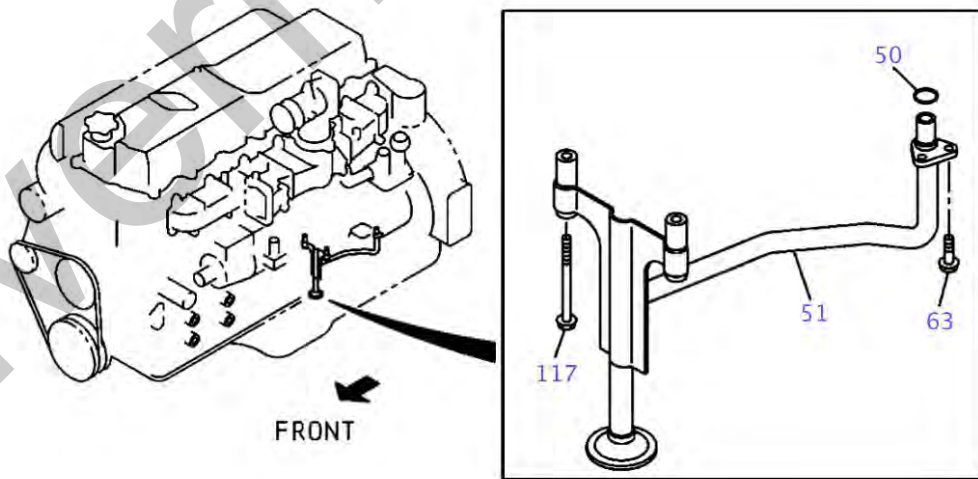
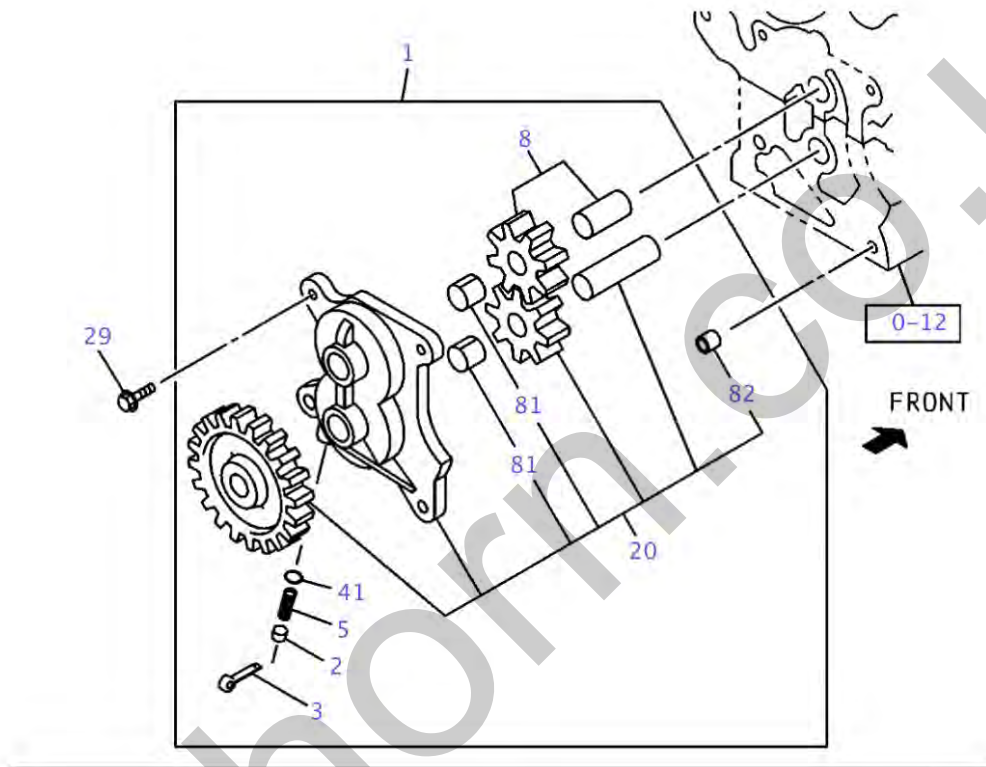
Silverhorn.co.uk



050A0211571

ITEM	PART NO.	PART NAME	QTY	Reference	APPLICABLE NO.
.	.	OIL COOLER AND OIL FILTER			
2	VI1132402322	ELEMENT; OIL FILTER	1		
2	VI8983020751	ELEMENT; OIL FILTER	1		
2	VI8983758600	ELEMENT; OIL FILTER	1		
13	VI1131600350	VALVE; RELIEF	1		
20	VI8943936040	PLUG; COOLER BODY	1		
21	VI8980857240	GASKET; PLUG	1		
25	VI1132193240	NUT; CORE TO BODY	4	M10 FLANGE	
26	VI8982315380	CORE ASM; OIL COOLER	1		
28	VI8943949300	GASKET; CORE TO BODY	2		
31A	VI0281510250	BOLT; OIL PIPE	1	M10X25 FLANGE	
31B	VI0281510900	BOLT; OIL PIPE	3	M10X90 FLANGE	
102	VI8982315370	COOLER ASM; OIL	1		
103A	VI0280808220	BOLT; OIL COOLER	24	M8X22 FLANGE	
103B	VI0286508350	BOLT; OIL COOLER	1	M8X35 FLANGE	
103C	VI1090440711	BOLT; OIL COOLER	3	M8X55 FLANGE	
196	VI8976009360	THERMOSTAT; OIL COOLER	1	90 CELSIUS	
197	VI8943917280	GASKET; THERMOSTAT	1		
288	VI1096050250	PLUG; OIL DRAIN	2	PT3/4	
321A	VI8943993390	GASKET; OIL FILTER TO C/BL	1	ID=9.8	
321B	VI8943993990	GASKET; OIL FILTER TO C/BL	2	ID=22.1	
323	VI8973638403	COVER; OIL PORT	1		
400A	VI0281510500	BOLT; BRKT	1	M10X50 FLANGE	
400B	VI0281510800	BOLT; BRKT	1	M10X80 FLANGE	
400C	VI0281512500	BOLT; BRKT	3	M12X50 FLANGE	
444	VI1096232990	GASKET; ELEMENT TO BODY	2	ID=38.7	
469A	VI8943990020	GASKET; OIL COOLER TO C/BL	1		
469B	VI8980454490	GASKET; OIL COOLER TO C/BL	1	ID=20	
496	VI8973243861	FILTER ASM; OIL	1		
496	VI8983042431	FILTER ASM; OIL	1		
496	VI8983758662	FILTER ASM; OIL	1		
517	VI8943917310	PLUG; THERMOSTAT, OIL COOLER	1		
569	VI8981805030	PIPE; WATER, EGR	2		
571	VI8980274560	SENSOR; OIL PRESSURE	1		
572	VI8982513450	GASKET; OIL PRESSURE	1	ID=14.2 OD=19.2	
0-11	.				
0-12	.				
0-31	.				

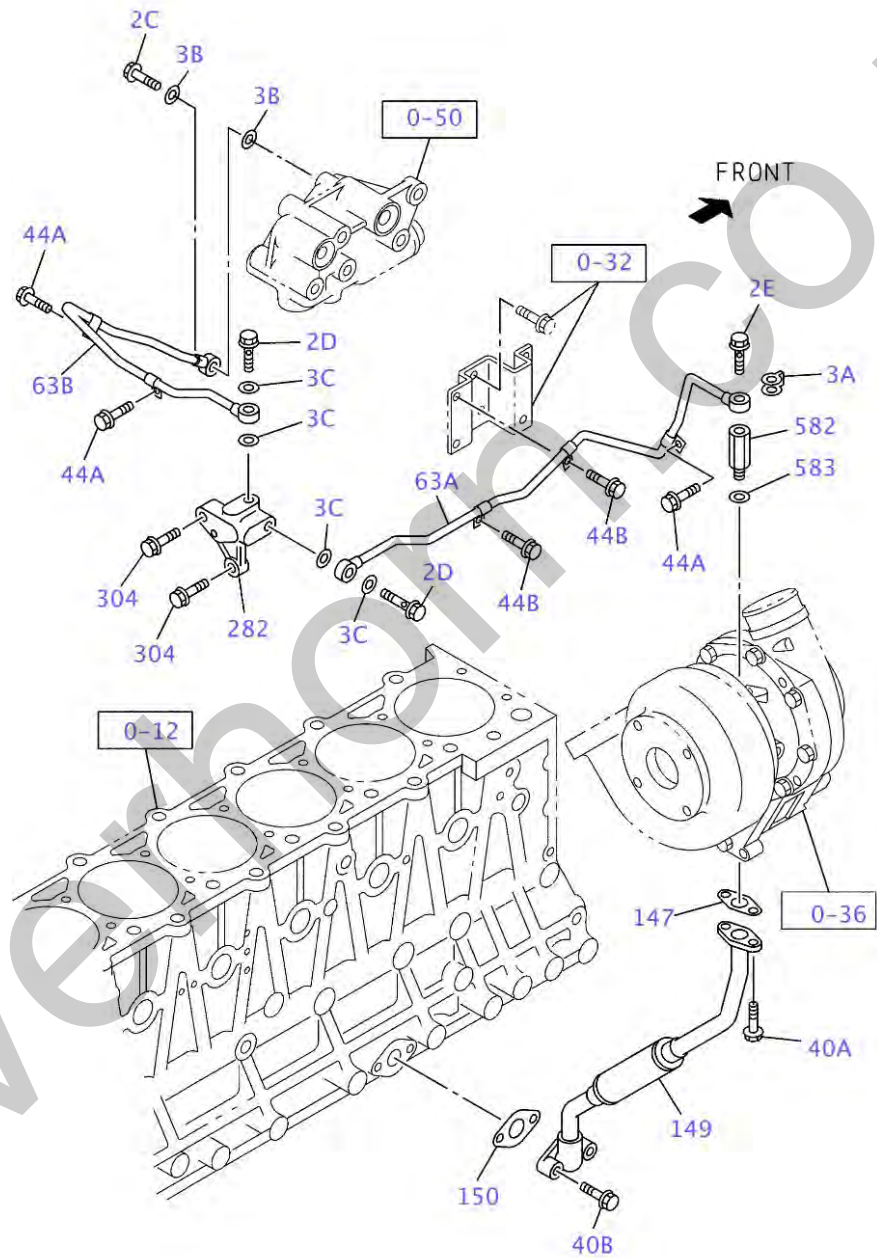
オイルポンプとオイルストレーナ・OIL PUMP AND OIL STRAINER



051A0111571

ITEM	PART NO.	PART NAME	QTY	Reference	APPLICABLE NO.
	.	OIL PUMP AND OIL STRAINER			
	.				
1	VI8976418350	PUMP ASM; OIL	1		
2	VI5131650040	SEAT; SPR	1		
3	VI9081040300	PIN; SPLIT	1	L=30	
5	VI5095800980	SPRING; COIL	1		
8	VI8976418380	GEAR; DRIVEN, OIL PUMP	1		
20	VI8976418390	GEAR; DRIVE, OIL PUMP	1		
29	VI0280508250	BOLT; OIL PUMP	4	M8X25 FLANGE	
41	VI5098430030	BALL; OIL RELIEF VLV	1		
50	VI8943993980	GASKET; OIL PIPE, STRAINER TO PUMP	1	ID=24.5	
51	VI8982090970	STRAINER & PIPE ASM; OIL	1		
63	VI0280808140	BOLT; OIL PIPE, STRAINER TO PUMP	2	M8X14 FLANGE	
81	VI8943935961	BUSHING; GEAR SHAFT, OIL PUMP	2		
82	VI9131190220	DOWEL; OIL PUMP	2		
117	VI0281560150	BOLT; STAY TO CRANKCASE	2	M10X150 FLANGE	
	.				
0-12	.				

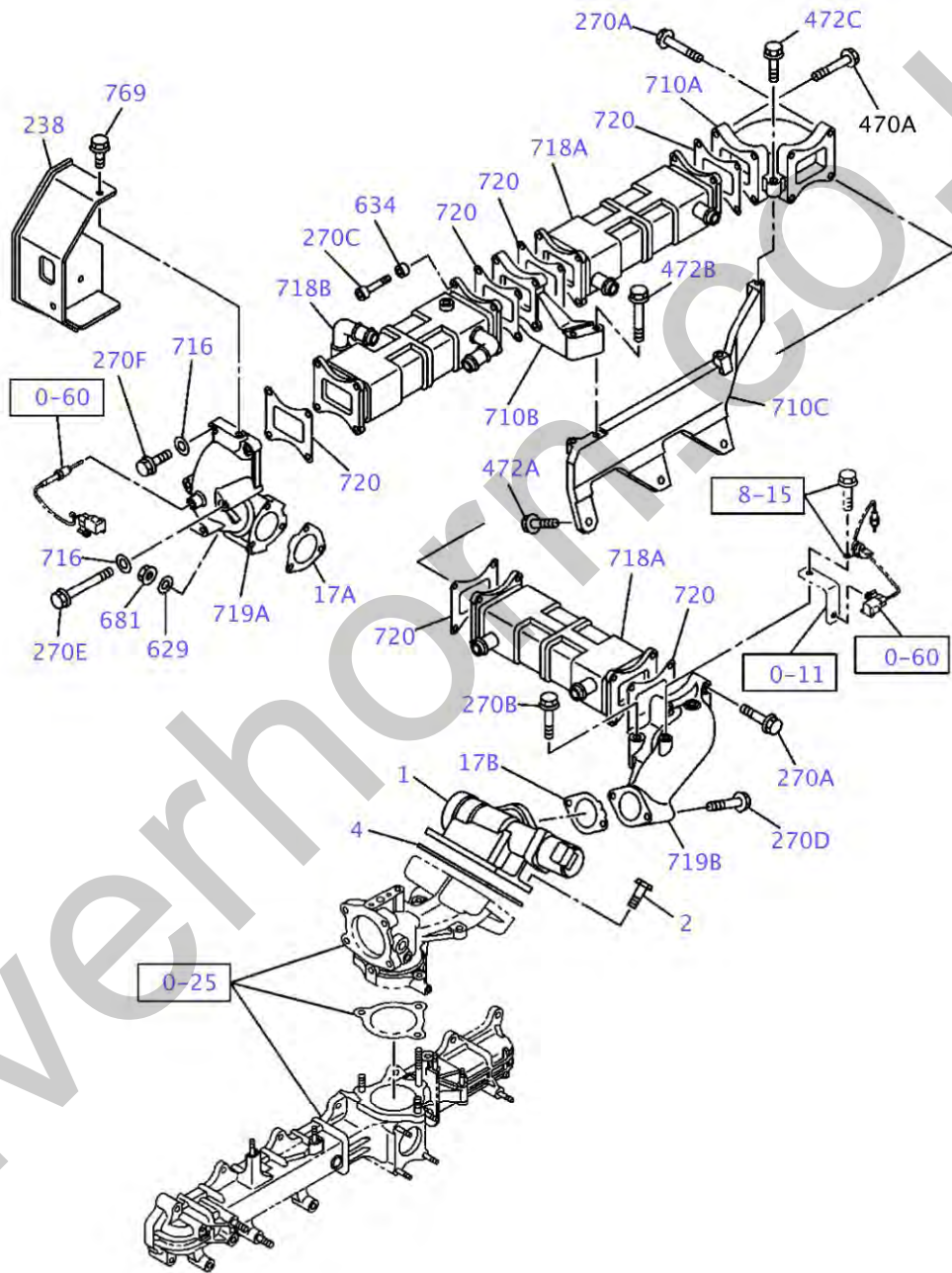
オイル アンド バキューム パイピング ; エンジン・OIL AND VACUUM PIPING; ENGINE



052A0111571

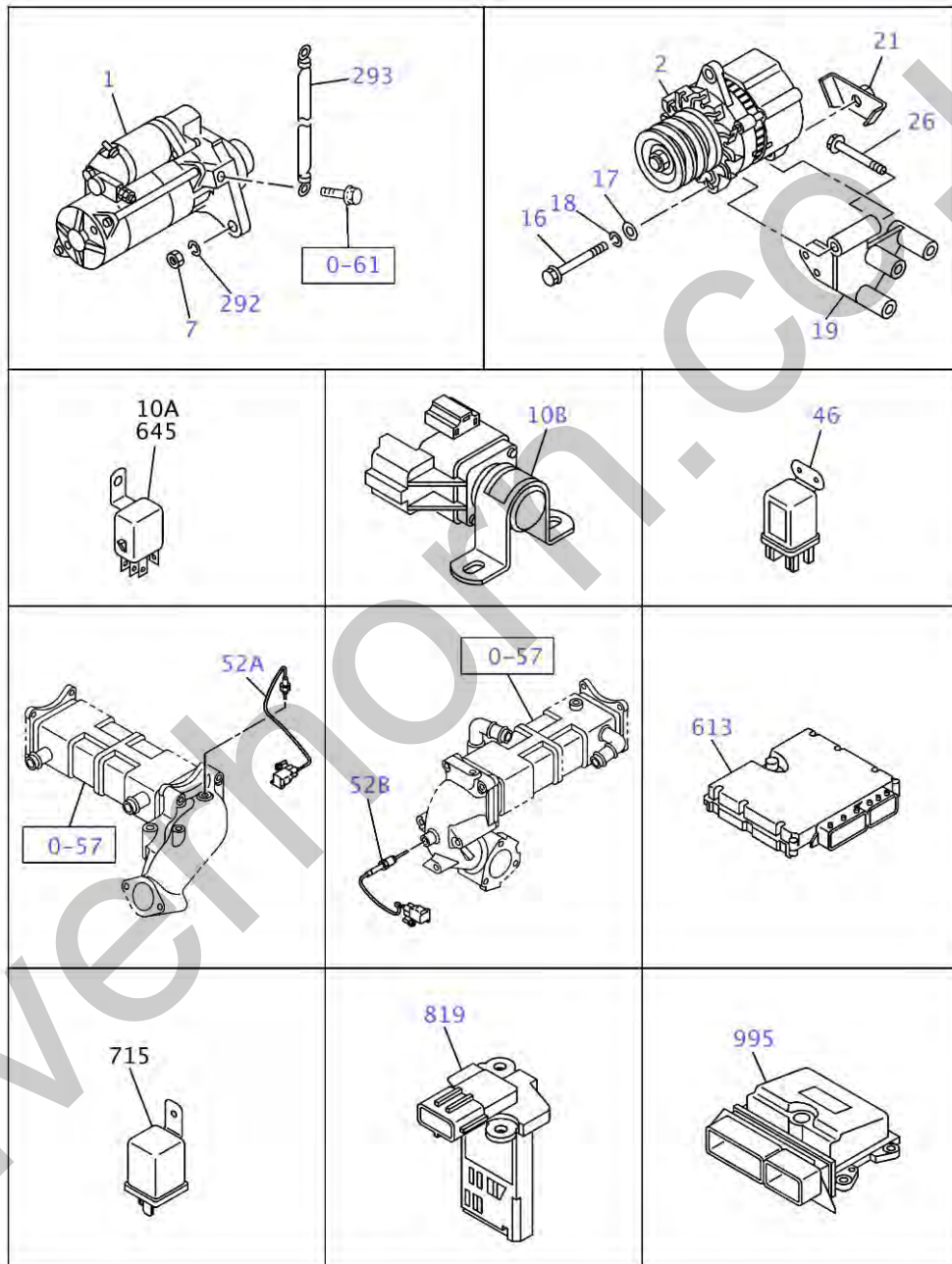
ITEM	PART NO.	PART NAME	QTY	Reference	APPLICABLE NO.
.	.	OIL AND VACUUM PIPING; ENGINE			
2C	VI8980378230	BOLT; EYE, OIL PIPE	1	M10X28 EYE-BOLT	
2D	VI8980378260	BOLT; EYE, OIL PIPE	2	M12X27 EYE-BOLT	
2E	VI8982144460	BOLT; EYE, OIL PIPE	1	M12X28 EYE-BOLT	
3A	VI8973311371	GASKET; EYE BOLT, OIL PIPE	1	ID=12.6 OD=17.6	
3B	VI9095714100	GASKET; EYE BOLT, OIL PIPE	2	ID=10.2 OD=16	
3C	VI9095714120	GASKET; EYE BOLT, OIL PIPE	4	ID=12.2 OD=18	
40A	VI0286508300	BOLT; OIL PIPE	2	M8X30 FLANGE	
40B	VI0286508400	BOLT; OIL PIPE	2	M8X40 FLANGE	
44A	VI0280508120	BOLT; CLIP, OIL PIPE	3	M8X12 FLANGE	
44B	VI0280508160	BOLT; CLIP, OIL PIPE	2	M8X16 FLANGE	
63A	VI8981154981	PIPE; OIL, TURBOCHARGER FEED	1		
63B	VI8982348960	PIPE; OIL, TURBOCHARGER FEED	1		
147	VI8943906411	GASKET; OIL PIPE TO TURBOCHARGER	1		
149	VI8981064901	PIPE; OIL RETURN, TURBOCHARGER	1		
150	VI8943946710	GASKET; OIL PIPE TO C/BL	1	ID=30	
282	VI8981145280	BRACKET; OIL PIPE	1		
304	VI0280508350	BOLT; BRKT, OIL PIPE	2	M8X35 FLANGE	
582	VI8944725830	ADAPTER; OIL PIPE	1		
583	VI8944725841	GASKET; ADAPTER	1	T=2.5	
0-12	.				
0-32	.				
0-36	.				
0-50	.				

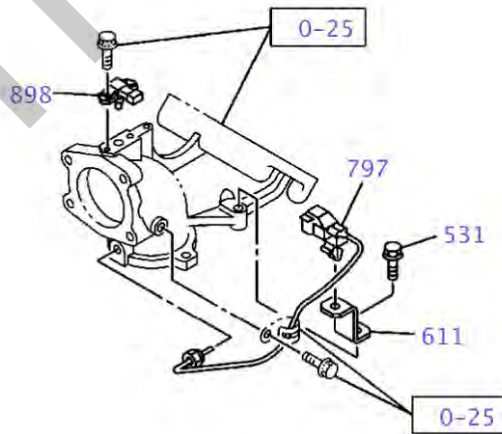
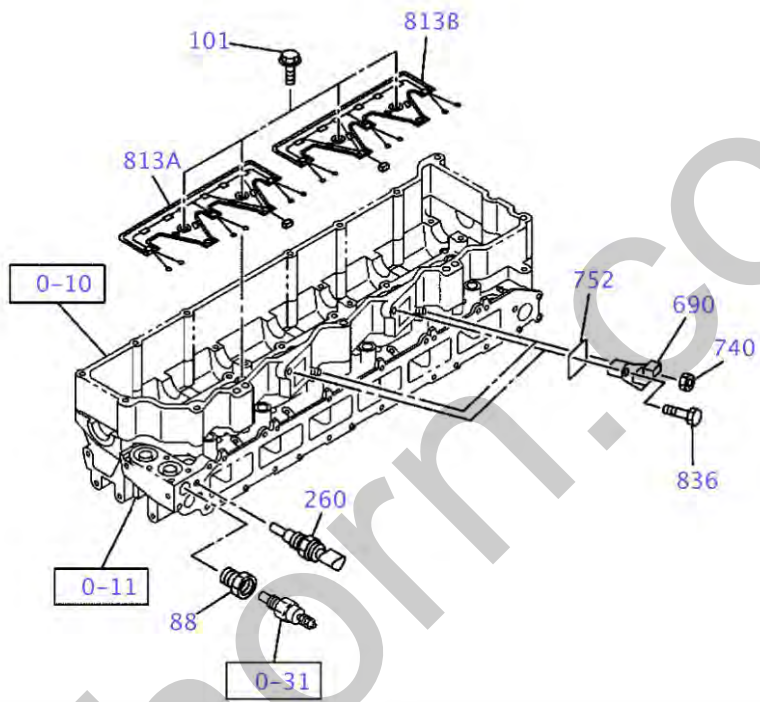
エミッション パイプング ・ EMISSION PIPING



057A0111571

ITEM	PART NO.	PART NAME	QTY	Reference	APPLICABLE NO.
	.	EMISSION PIPING			
1	VI8982391302	VALVE; EGR	1		
2	VI0287510300	BOLT; EGR VLV	4	M10X30 FLANGE	
4	VI8976084230	GASKET; EGR VLV	1		
17A	VI1161570210	GASKET; EGR PIPE	1	ID=55	
17B	VI8976032820	GASKET; EGR PIPE	1	ID=47	
238	VI8982374140	PROTECTOR; HEAT, EGR	1		
270A	VI0280508450	BOLT	12	M8X45 FLANGE	
270B	VI0281510700	BOLT	1	M10X70 FLANGE	
270C	VI0583308600	BOLT	4	M8X60 HEX SOCKET	
270D	VI8973722920	BOLT	2	M10X65 FLANGE	
270E	VI8981733820	BOLT	2	M8X100 FLANGE	
270F	VI8980532240	BOLT	2	M8X35 FLANGE	
472A	VI0280608350	BOLT; BRKT	3	M8X35 FLANGE	
472B	VI0280608700	BOLT; BRKT	2	M8X70 FLANGE	
472C	VI0281510500	BOLT; BRKT	1	M10X50 FLANGE	
629	VI1095560150	WASHER; LK, PIPE	3	T=2.2	
634	VI8981557770	WASHER; PL, EGR PIPE	4		
681	VI8973099420	NUT; EGR PIPE	3	M10 FLANGE	
710A	VI8981217110	BRACKET; EGR COOLER	1		
710B	VI8981217120	BRACKET; EGR COOLER	1		
710C	VI8982053930	BRACKET; EGR COOLER	1		
716	VI5095000120	WASHER; EGR PIPE	4	ID=8.4 T=1.4	
718A	VI8981078574	COOLER; EGR	2		
718B	VI8981222262	COOLER; EGR	1		
719A	VI8982366670	PIPE; EGR	1		
719B	VI8982366831	PIPE; EGR	1		
720	VI8982007530	GASKET; COOLER	6		
769	VI8973780750	BOLT; HEAT PROTECTOR	4	M8X14 FLANGE	
0-11	.				
0-25	.				
0-60	.				
8-15	.				



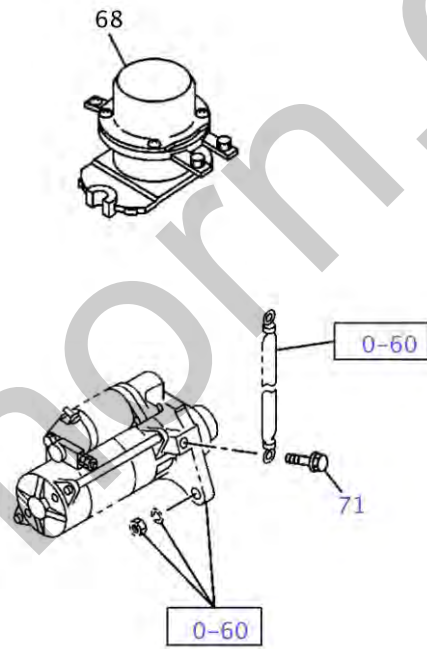


060A0211571

ITEM	PART NO.	PART NAME	QTY	Reference	APPLICABLE NO.
	.	ENGINE ELECTRICAL CONTROL PARTS			
1	VI8981412063	STARTER ASM	1	24V 5.0KW MITSUBISHI	
2	VI1812006037	GENERATOR ASM	1	24V 50A MITSUBISHI	1403-1605
2	VI8983413971	GENERATOR ASM	1	24V 50A MITSUBISHI	1606-
7	VI0911105140	NUT; STARTER	2	M14	
10B	VI8980056311	RELAY; STARTER	1	24V NIKKO	
16	VI1090001331	BOLT; GEN	1	M14X135	
17	VI0916105140	WASHER; PL, GEN	1	ID=15	
18	VI0915108140	WASHER; LK, GEN	1	ID=14.2	
19	VI1197111361	BRACKET; GEN	1		
21	VI1197110290	BRACKET; GEN	1	W/NUT M14	
26	VI0281510800	BOLT; GEN BRKT	3	M10X80 FLANGE	
46	VI8944607061	RELAY; GLOW PLUG	1		
52A	VI8980283980	SENSOR; EGR GAS	1		
52B	VI8980309550	SENSOR; EGR GAS	1		
88	VI8943963961	ADAPTER; SW	1		
101	VI0286508400	BOLT; HARNESS	4	M8X40 FLANGE	
260	VI8980237170	SENSOR; WATER TEMP	1		
292	VI0915108140	WASHER; LK, STARTER	2	ID=14.2	
293	VI1826502390	CABLE; STARTER EARTH	1	L=550	
531	VI0280508160	BOLT; SENSOR BRKT	1	M8X16 FLANGE	
611	VI1474766580	BRACKET; SENSOR	1		
613	VI8983257680	CONTROL UNIT; ENG	1		
613	VI8983605350	CONTROL UNIT; ENG	1		
613	VI8975585640	CONTROL UNIT; ENG	1		
613	VI8976605120	CONTROL UNIT; ENG	1		
690	VI8943908581	CONNECTOR	2		
740	VI0911801080	NUT	2	M8 FLANGE	
752	VI8943913100	GASKET	2		
797	VI8973811820	SENSOR; MAT	1		
813A	VI8981774470	HARNESS; INJECTOR	1		
813B	VI8981774480	HARNESS; INJECTOR	1		
819	VI8976019670	SENSOR; MASS AIR FLOW (MAF)	1		
836	VI0280508120	BOLT; CONNECTOR	2	M8X12 FLANGE	
898	VI8981216971	SENSOR; BOOST	1		
995	VI8983257781	CONTROL UNIT; DEF DCM	1		
995	VI8983577891	CONTROL UNIT; DEF DCM	1		
995	VI8975470770	CONTROL UNIT; DEF DCM	1		
995	VI8976739990	CONTROL UNIT; DEF DCM	1		
0-10	.				
0-11	.				
0-25	.				

ITEM	PART NO.	PART NAME	QTY	Reference	APPLICABLE NO.
0-31	.				
0-57	.				
0-61	.				

Silverhorn.CO.UK



061A0111571

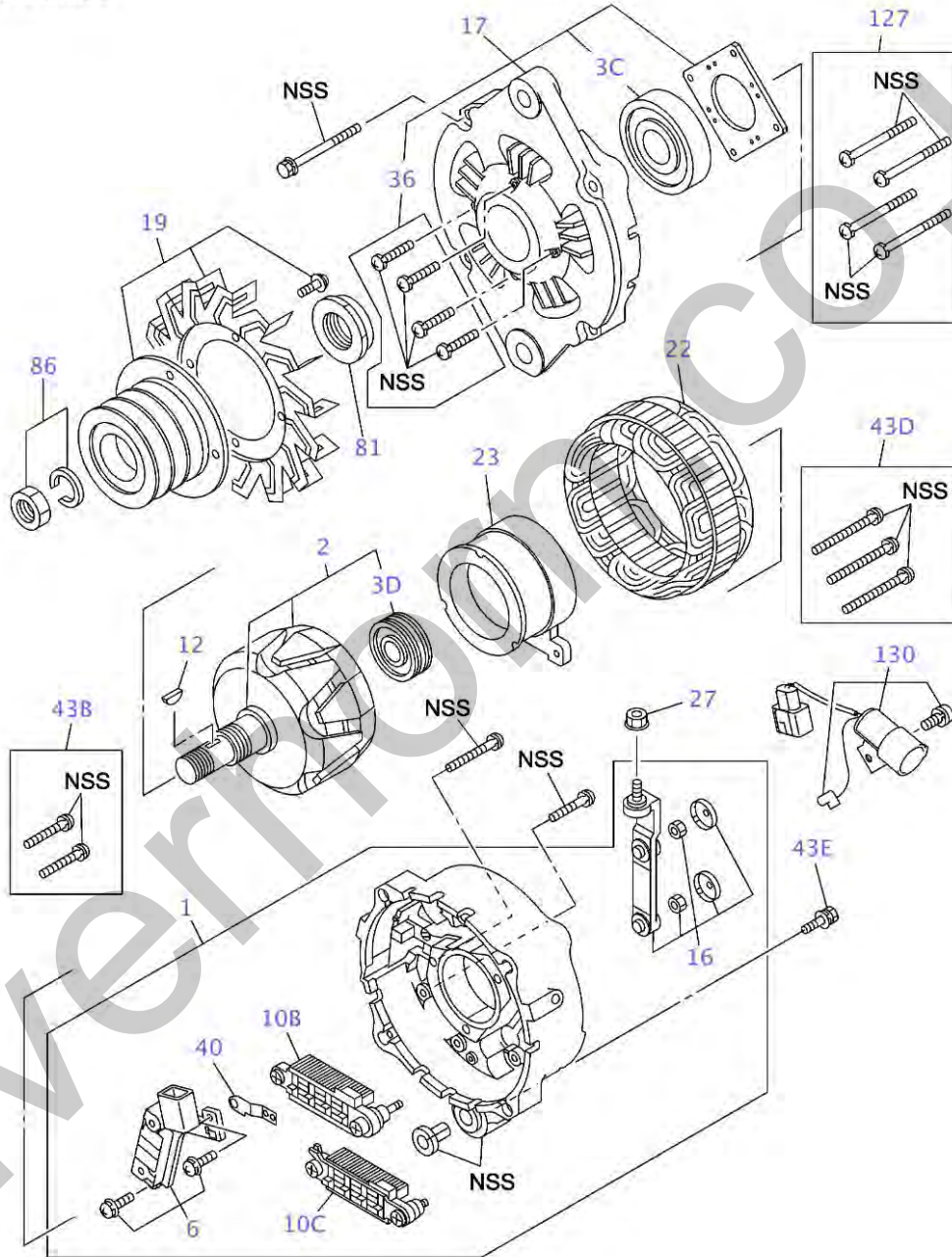
ITEM	PART NO.	PART NAME	QTY	Reference	APPLICABLE NO.
	.	BATTERY AND ENGINE ELECTRICAL PARTS			
71	VI0280510200	BOLT; BATTERY CABLE	1	M10X20 FLANGE	
0-60	.				

Silverhorn.CO.UK

ITEM	PART NO.	PART NAME	QTY	Reference	APPLICABLE NO.
	.	STARTER			
	.				
2	VI8981528680	CASE; PINION, STARTER	1		
6	VI8944756880	STOPPER; PINION STARTER	1		
7	VI1811297590	CLUTCH ASM; PINION, STARTER	1		1403-1407
7	VI8982455490	CLUTCH ASM; PINION, STARTER	1		1408-
11	VI8971164840	WASHER; GEAR SHAFT STARTER	1		
13	VI8981522770	YOKE; STARTER	1		
16	VI1811210750	ARMATURE; STARTER	1		
17	VI1811298370	BEARING; ARMATURE, STARTER	1		
20	VI1811160660	BRUSH; (+), STARTER	2		
21	VI1811297680	SPRING; BRUSH HOLDER STARTER	4		
22	VI1811210660	HOLDER; BRUSH STARTER	1		1403-1407
22	VI8982455530	HOLDER; BRUSH STARTER	1		1408-
23	VI1811152290	COVER; RR COVER STARTER	1		
27	VI1811297690	BOLT; THROUGH, STARTER	1	1 SET=2 PIECES	
28	VI1811297620	LEVER; SHIFT, STARTER	1		
31	VI8982372570	SWITCH; ENGAGE STARTER	1		
46	VI8971781530	GEAR; CLU STARTER	1		1403-1407
46	VI8971164850	GEAR; CLU STARTER	1		1408-
48	VI8971165150	BALL; PINION, STARTER	1		
54	VI1811297610	CLUTCH; PINION, STARTER	1		
55	VI8980608350	PINION; CLU, STARTER	1		
90	VI1811297670	GASKET; ARMATURE	2		
91	VI1811297640	COVER; STARTER	1		
96	VI8971164890	GASKET; FRT CASE	1		
97	VI8971164900	GEAR; STARTER	4		
128	VI1811297580	BEARING; STARTER	1		
133	VI1811297650	SCREW SET; STARTER	1		
140	VI8973763900	GROMMET; RR COVER	1		

ジェネレータ・GENERATOR

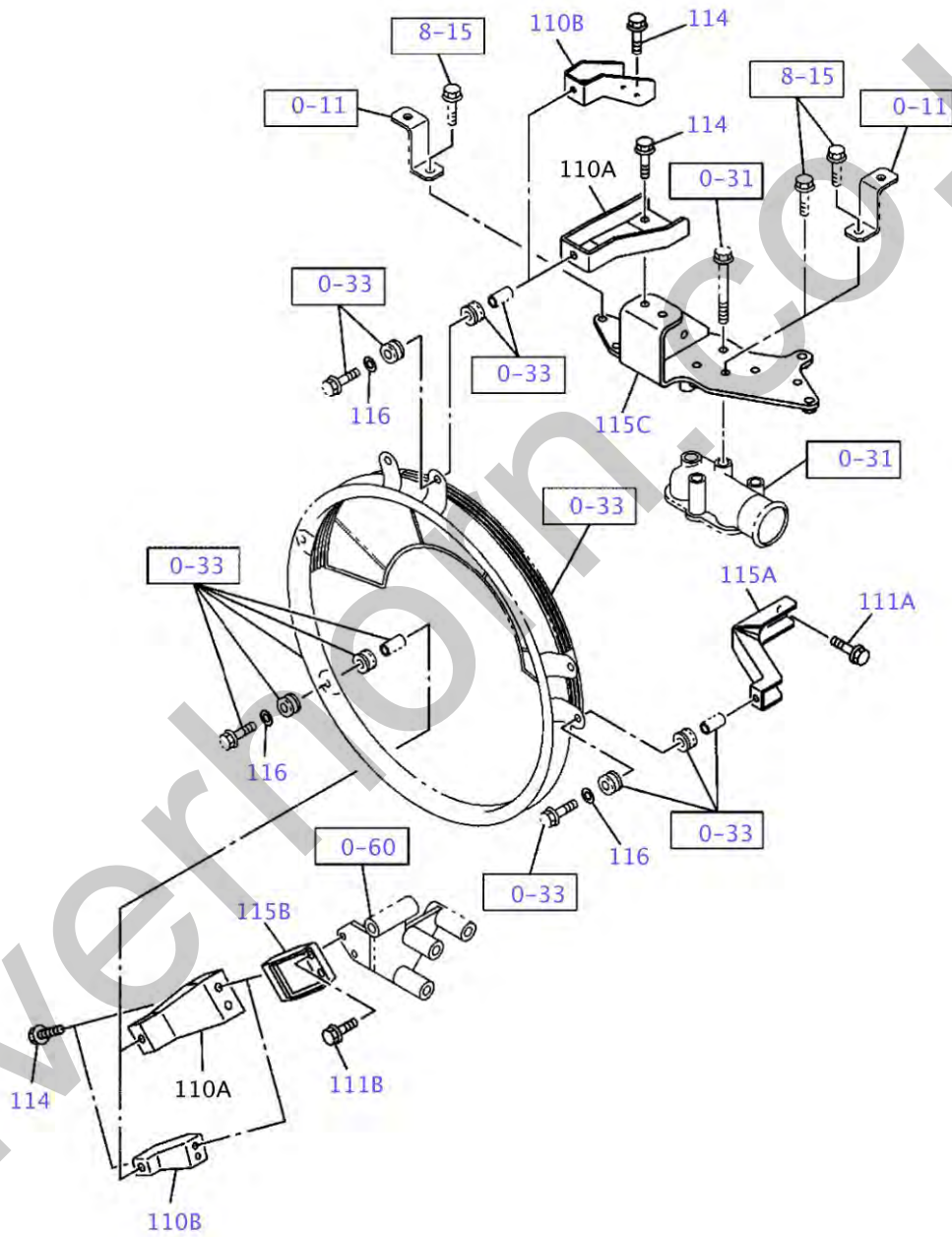
ASM P-NO.
1-81200-633-*



066A0211571

ITEM	PART NO.	PART NAME	QTY	Reference	APPLICABLE NO.
	.	和タイトル			
	.				
1	VI1812143642	COVER ASM; RR, GEN	1		
2	VI1812211060	ROTOR; GEN	1		
3C	VI1812298150	BEARING; ROTOR, GEN	1		
3D	VI1812298160	BEARING; ROTOR, GEN	1		
6	VI1812600180	REGULATOR ASM; VOLTAGE, GEN	1		
10B	VI1812191330	RECTIFIER; GEN	1		
10C	VI1812191340	RECTIFIER; GEN	1		
12	VI1812298220	KEY; ROTOR, GEN	1		
16	VI1812298260	TERMINAL ASM; RECTIFIER, GEN	1		
17	VI1812131100	COVER ASM; FRT, GEN	1		
19	VI1812221503	PULLEY; GEN	1		
22	VI1812111321	STATOR; GEN	1		
23	VI1812120201	COIL; ROTOR GEN	1		
27	VI1812298210	NUT; RECTIFIER, GEN	1		
36	VI1812298140	SCREW; FRT COVER	1		
40	VI1812221480	PLATE; RR COVER	1		
43B	VI1812297740	SCREW; RR END COVER	1		
43D	VI1812298170	SCREW; RR END COVER	1		
43E	VI1812299250	SCREW; RR END COVER	1		
81	VI1812298130	SPACER; ROTOR, GEN	1		
86	VI8971781340	NUT SET; PULLEY, GEN	1		
127	VI1812298120	BOLT SET; GEN	1		
130	VI1812298290	CONNECTOR; GEN	1		

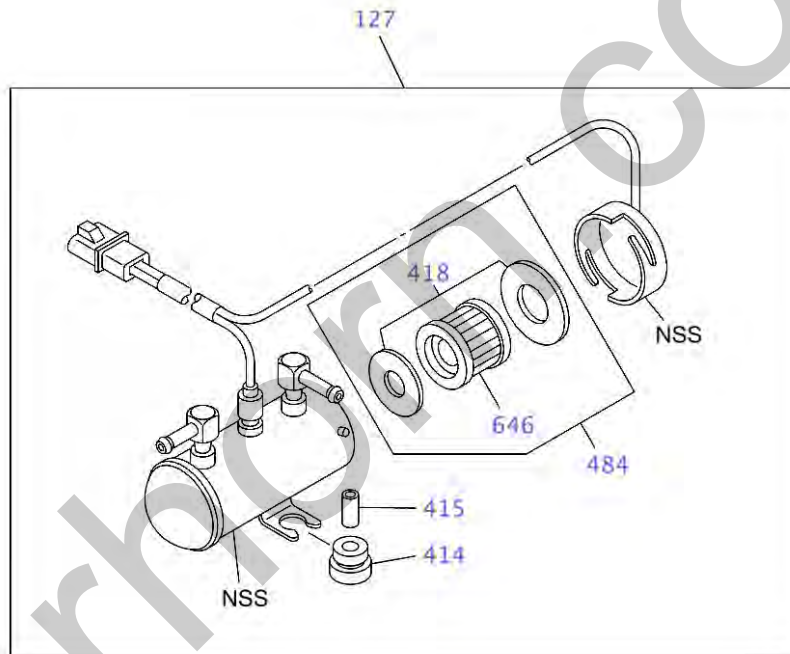
ラジエータ・RADIATOR



110A0111571

ITEM	PART NO.	PART NAME	QTY	Reference	APPLICABLE NO.
	.	RADIATOR			
	.				
110B	VI8973759110	STAY; FAN GUIDE	2		
111A	VI0286510200	BOLT; BRKT	2	M10X20 FLANGE	
111B	VI0286510250	BOLT; BRKT	2	M10X25 FLANGE	
114	VI0286510250	BOLT; STAY	4	M10X25 FLANGE	
115C	VI8982374120	BRACKET; FAN GUIDE	1		
115B	VI1215594510	BRACKET; FAN GUIDE	1		
115A	VI1215594451	BRACKET; FAN GUIDE	1		
116	VI0916147100	WASHER; PL, BRKT	3	ID=10.5 OD=26	
	.				
0-11	.				
0-31	.				
0-33	.				
0-60	.				
8-15	.				

フエルトンク・FUEL TANK

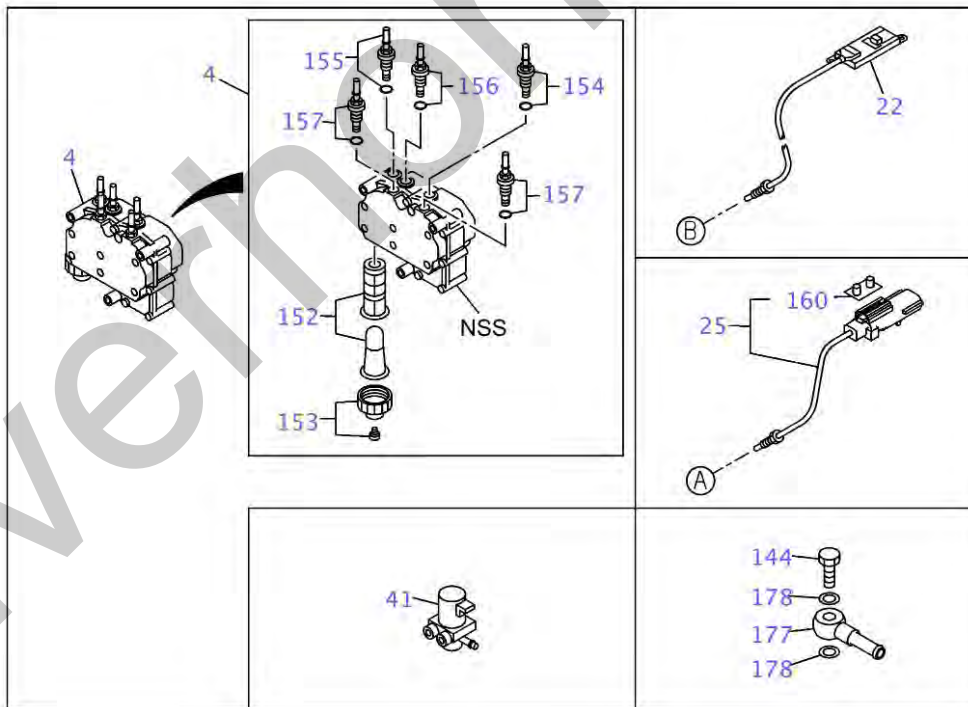
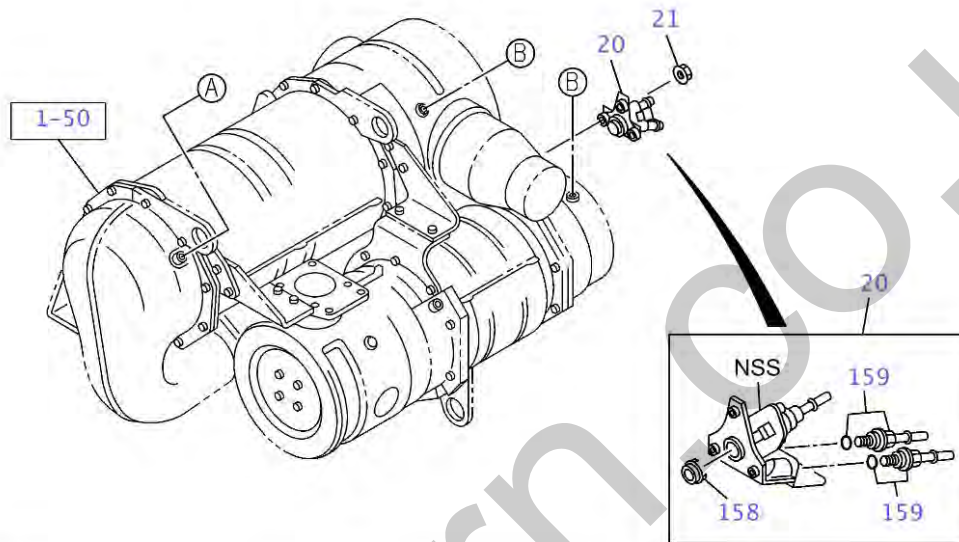


140A0111571

ITEM	PART NO.	PART NAME	QTY	Reference	APPLICABLE NO.
	.	FUEL TANK			
	.				
127	VI8975153011	PUMP ASM; FUEL, ELEC	1		
414	VI8970472660	GROMMET; PUMP MTG, ELEC FUEL PUMP	2		
415	VI8970472650	COLLAR; GROMMET, ELEC FUEL PUMP	2		
418	VI8980714040	GASKET; FUEL PUMP	1		
484	VI8981731650	REPAIR KIT; FUEL PUMP	1	MESH FILTER	
646	VI8980714010	FILTER; FUEL PUMP	1	MESH FILTER	

Silverhorn.CO.UK

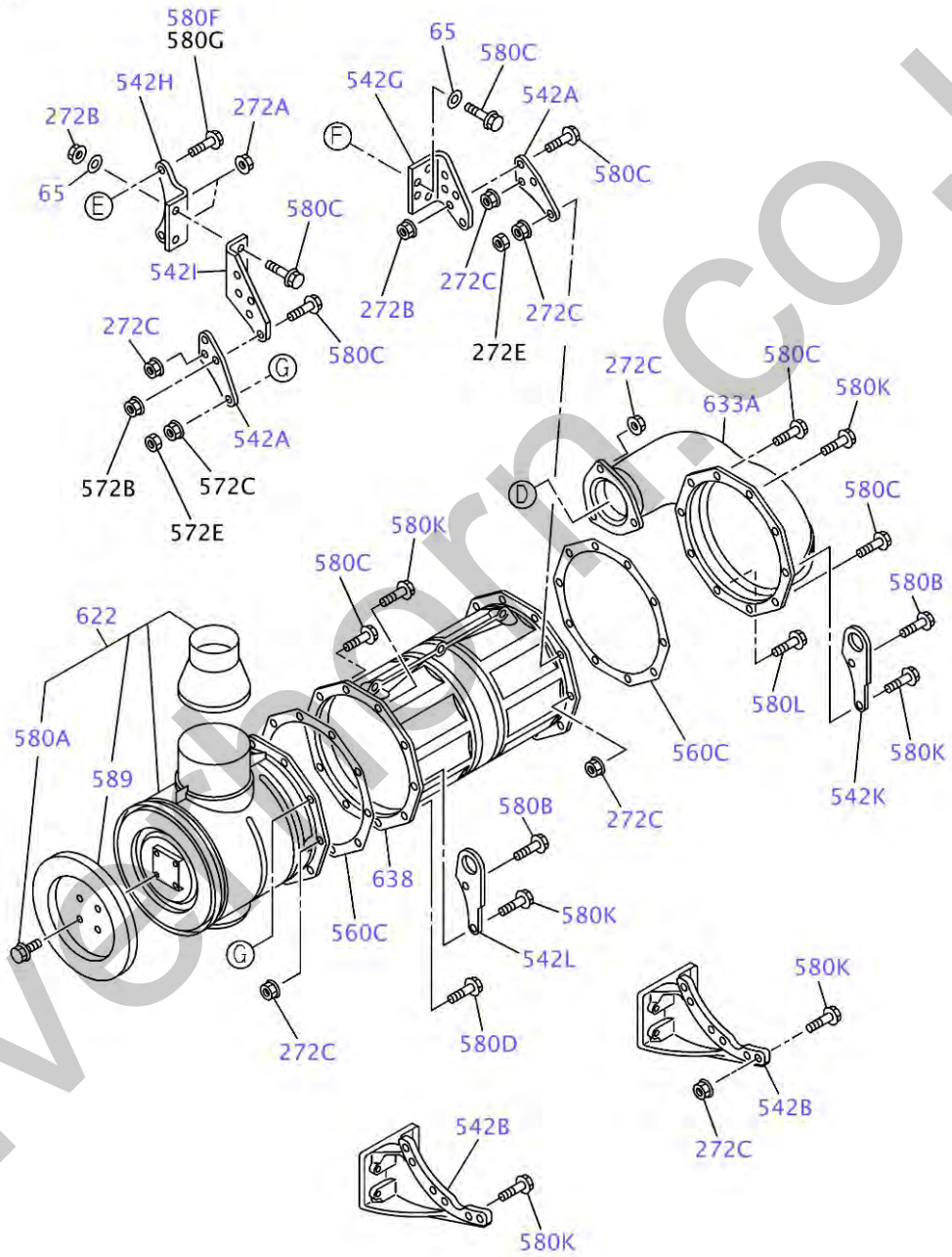
DEFタンク アンダーパージング ・ DEF TANK AND PIPING



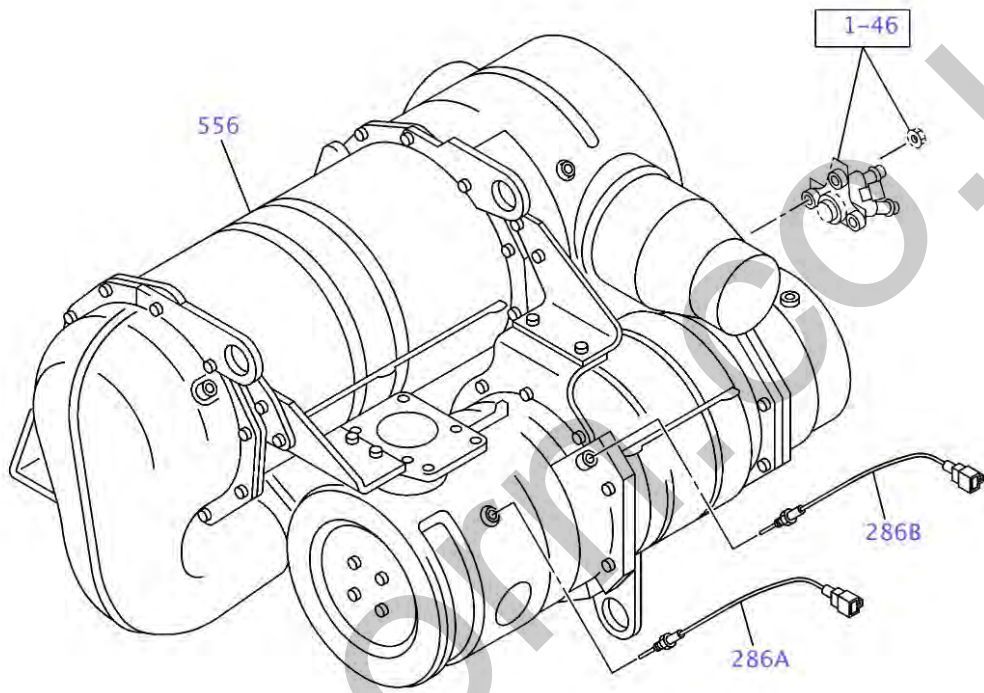
146A0111571

ITEM	PART NO.	PART NAME	QTY	Reference	APPLICABLE NO.
	.	DEF TANK AND PIPING			
4	VI8982264733	PUMP ASM; DEF, DCM SPLY	1		
20	VI8982318983	INJECTOR ASM; DEF DCM	1		
21	VI0911801060	NUT; INJECTOR ASM, DEF DCM	3	M6 FLANGE	
22	VI8983023940	SENSOR; DEF DCM EXH NOX	2		
25	VI8980863290	SENSOR; DEF DCM EXH TEMP	1		
41	VI8976289561	VALVE ASM; DEF TANK HTR DLVY	1		
144	VI9099063251	BOLT; PIPE	1	M14X29 EYE-BOLT	
152	VI8981694030	FILTER KIT; PUMP ASM, DEF DCM SPLY	1		
152	VI8983507160	FILTER KIT; PUMP ASM, DEF DCM SPLY	1		
153	VI8981694080	COVER KIT; PUMP ASM, DEF DCM SPLY	1		
154	VI8981694090	CONNECTOR KIT; INLET PUMP, DEF	1		
155	VI8981694110	CONNECTOR KIT; OUTLET PUMP, DEF	1		
156	VI8981694120	CONNECTOR KIT; RETURN PUMP, DEF	1		
156	VI8982688130	CONNECTOR KIT; RETURN PUMP, DEF	1		
157	VI8981694141	CONNECTOR KIT; COOLANT PUMP, DEF	2		
158	VI8980863330	GASKET; INJECTOR ASM, DEF DCM	1		
159	VI8981694161	CONNECTOR KIT; COOLANT, INJECTOR ASM DEF	2		
160	VI8981703310	CLIP; HARNESS, SENSOR DEF DCM EXH TEMP	1		
177	VI5133111260	PIPE ASM; DEF TANK	1		
178	VI1096301410	GASKET; PIPE	2	ID=14.2 OD=25	
1-50	.				

XAGD
XASS
XASW



150A0411571

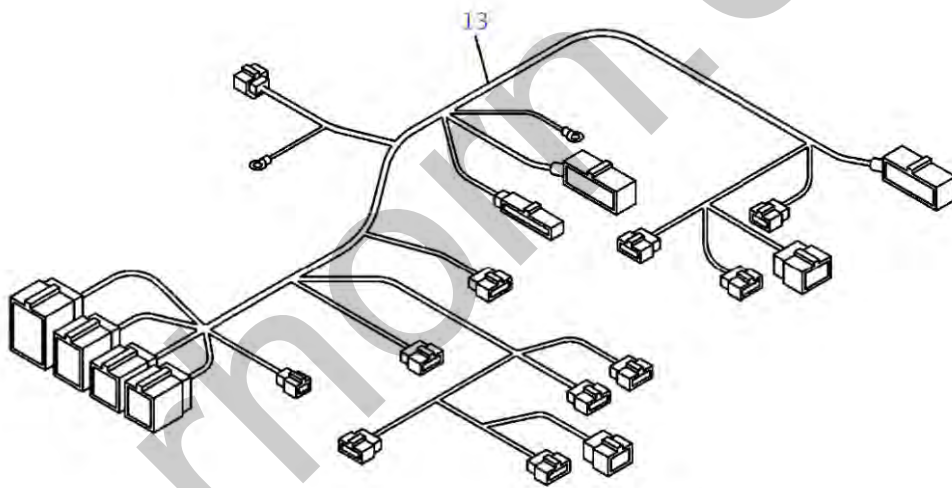


16	35B	35C	182A
182B	569	635	

150A0711571

ITEM	PART NO.	PART NAME	QTY	Reference	APPLICABLE NO.
	.	EXHAUST PIPE AND SILENCER			
16	VI8982710970	FLANGE; EXH PIPE	1	ID=61	
35B	VI8943925532	GASKET; EXH PIPE TO MANIF	1	ID=83	
35A	VI1221160400	GASKET; EXH PIPE TO MANIF	2	ID=81.5	
35A	VI1221160300	GASKET; EXH PIPE TO MANIF	2	ID=113	
65	VI0916147100	WASHER; PL	4	ID=10.5 OD=26	
272A	VI8970614011	NUT; FLANGE	18	M8 FLANGE	
272B	VI0911802100	NUT; FLANGE	8	M10 FLANGE	
272C	VI8970961921	NUT; FLANGE	26	M10 FLANGE	
286A	VI8981783581	SENSOR; OXYGEN	1	TEMPERATURE PRESSURE	
286B	VI8981867621	SENSOR; OXYGEN	1	TEMPERATURE PRESSURE	
542A	VI8981329131	BRACKET	2		
542B	VI8982367060	BRACKET	2		
542C	VI8982374441	BRACKET	1		
542D	VI8982374450	BRACKET	1		
542F	VI8982374490	BRACKET	1		
542G	VI8982377370	BRACKET	1		
542H	VI8982377390	BRACKET	1		
542I	VI8982377400	BRACKET	1		
542J	VI8982378270	BRACKET	1		
542K	VI8982378280	BRACKET	1		
542L	VI8982378300	BRACKET	1		
542E	VI8982374480	BRACKET	1		
556	VI8983245661	DPD ASM	1		
557	VI8982389730	CATALYST ASM	1		
558	VI8982389750	FILTER ASM	1		
560A	VI8976110920	GASKET; DPD	1		
560B	VI8976282570	GASKET; DPD	1		
560C	VI8981184211	GASKET; DPD	2		
561	VI8982377220	PIPE; DPD	1		
580E	VI0280608300	BOLT; FLANGE	6	M8X30 FLANGE	
580F	VI0280608400	BOLT; FLANGE	7	M8X40 FLANGE	
580K	VI0280610450	BOLT; FLANGE	10	M10X45 FLANGE	
580L	VI0280610500	BOLT; FLANGE	6	M10X50 FLANGE	
580A	VI0280506120	BOLT; FLANGE	4	M6X12 FLANGE	
580H	VI0280608500	BOLT; FLANGE	2	M8X50 FLANGE	
580J	VI0280608600	BOLT; FLANGE	1	M8X60 FLANGE	
580B	VI0280610600	BOLT; FLANGE	2	M10X60 FLANGE	
580C	VI0280610350	BOLT; FLANGE	16	M10X35 FLANGE	
580I	VI8972239990	BOLT; FLANGE	2	M8X53 FLANGE	
580D	VI0280608250	BOLT; FLANGE	2	M8X25 FLANGE	

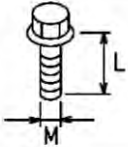
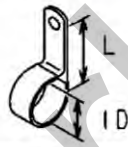
ITEM	PART NO.	PART NAME	QTY	Reference	APPLICABLE NO.
589	VI8981525291	PROTECTOR; HEAT, DPD	1		
622	VI8983245690	SILENCER SUB ASM; DPD FRONT	1		
633A	VI8982177830	CHAMBER SUB ASM; DEF, FRONT	1		
633B	VI8982377200	CHAMBER SUB ASM; DEF, FRONT	1		
634	VI8981184221	GASKET; MIXER	2		
638	VI8982385060	CATALYST ASM; DEF	1		
641B	VI1878315470	GASKET KIT; FLANGE, DPD	1		
643	VI8981413510	STUD	3	M6X34.3 HEXALOBULAR	
	.				
1-46	.				

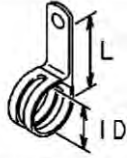
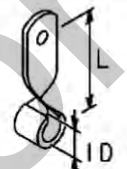



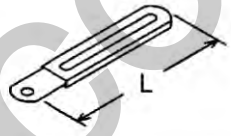

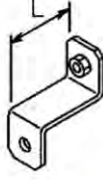
810A0111571

ITEM	PART NO.	PART NAME	QTY	Reference	APPLICABLE NO.
	.	WIRING HARNESS AND FUSE			
13	VI8982682822	HARNESS; ENG	1		

Silverhorn.CO.UK

SIZE		KEY NO.
		
M	L	
8	12	304A
	16	304B
	20	139 304F
10	16	304C
	20	304D
	25	304E
		
ID	L	
11	24	305A
19	28	305B

SIZE		KEY NO.
		
ID	L	
21	24	305G
24	32	305D
31	35	305C
		
ID	L	
8	55	305E
		
ID	L	
18	44	305J
21	47.5	305H

SIZE		KEY NO.
		
L		
80	305F	
100	305I	
		
ID	B	
12	14	305K
		
		308

ITEM	PART NO.	PART NAME	QTY	Reference	APPLICABLE NO.
	.	FIXING PARTS; WIRING HARNESS			
139	VI0280508200	BOLT; BRKT	2	M8X20 FLANGE	
304A	VI0280508120	BOLT; ENG HARNESS CLIP	5	M8X12 FLANGE	
304C	VI0281510160	BOLT; ENG HARNESS CLIP	1	M10X16 FLANGE	
304D	VI0281510200	BOLT; ENG HARNESS CLIP	1	M10X20 FLANGE	
304E	VI0281510250	BOLT; ENG HARNESS CLIP	1	M10X25 FLANGE	
304F	VI0286508200	BOLT; ENG HARNESS CLIP	1	M8X20 FLANGE	
304B	VI0280508160	BOLT; ENG HARNESS CLIP	13	M8X16 FLANGE	
305J	VI8973679851	CLIP; ENG HARNESS	10	ID=18 L=44	
305K	VI8973679831	CLIP; ENG HARNESS	1	ID=12 B=14	
305B	VI0952358560	CLIP; ENG HARNESS	1	ID=19 L=28	
305C	VI1097003291	CLIP; ENG HARNESS	1	ID=31 L=35	
305D	VI1097007661	CLIP; ENG HARNESS	3	ID=24 L=32	
305E	VI1097008391	CLIP; ENG HARNESS	1	ID=8 L=55	
305F	VI5097003071	CLIP; ENG HARNESS	1	L=80	
305G	VI8941768071	CLIP; ENG HARNESS	1	ID=21 L=24	
305H	VI8941781080	CLIP; ENG HARNESS	1	ID=21 L=47.5	
305A	VI0952350450	CLIP; ENG HARNESS	3	ID=11 L=24	
305I	VI8944430211	CLIP; ENG HARNESS	3	L=100	
308	VI1474758680	BRACKET; CLIP, ENG HARNESS	1	L=47	
308	VI1474770881	BRACKET; CLIP, ENG HARNESS	1	L=110	
308	VI1474781130	BRACKET; CLIP, ENG HARNESS	2	L=30	
308	VI8980895970	BRACKET; CLIP, ENG HARNESS	1	L=27	